

STATO ATTUALE

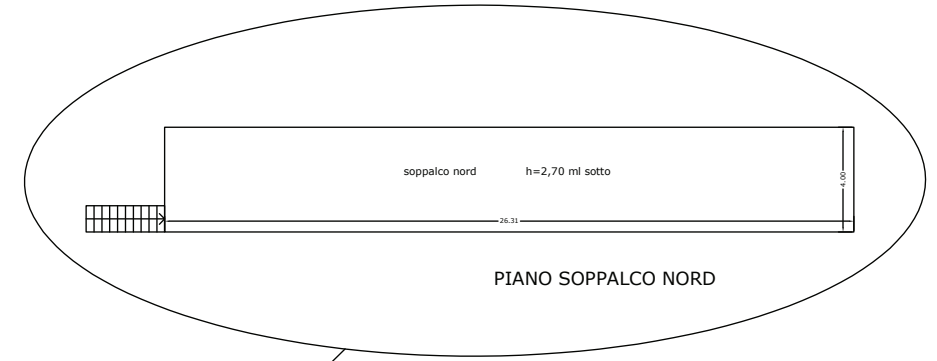
GENOVA, VIA ALBISSOLA 60-62 - Sez BOL Fg 14 M 672 S 29

PIANO STRADA (PIANO SECONDO dell'edificio)

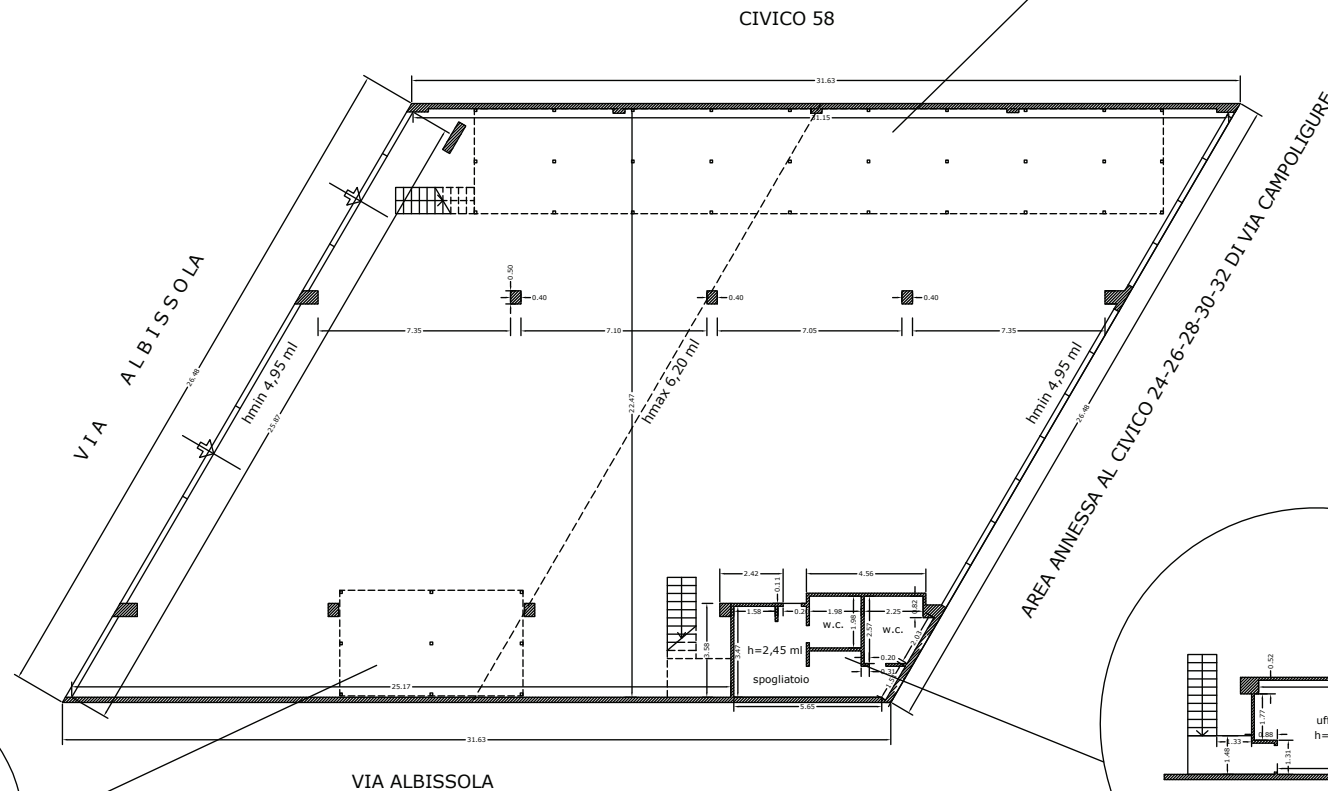
SUPERFICIE LORDA = 723,50 MQ - SUPERFICIE NETTA = 694,85 MQ

PIANO SOPPALCO UFFICIO = SUPERFICIE LORDA CHIUSA = 27,45 MQ - SUPERFICIE NETTA = 23,15 MQ

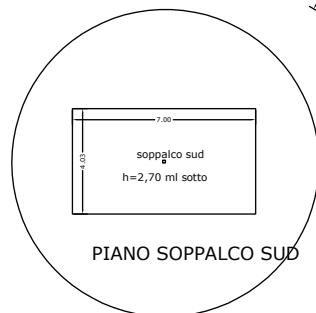
PIANO SOPPALCO (NORD mq 105,25 e SUD mq 28,20) = SUPERFICIE LORDA APERTA = 133,45 MQ



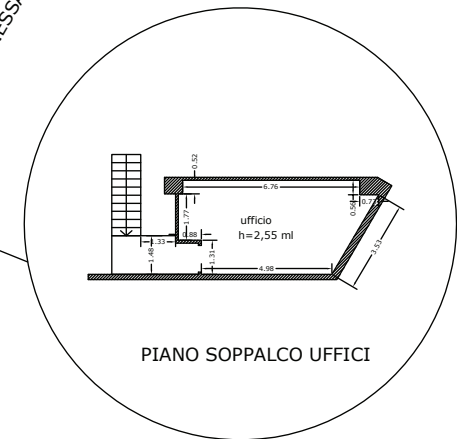
PIANO SOPPALCO NORD



PIANO SECONDO



PIANO SOPPALCO SUD



PIANO SOPPALCO UFFICI



scala 1:200

