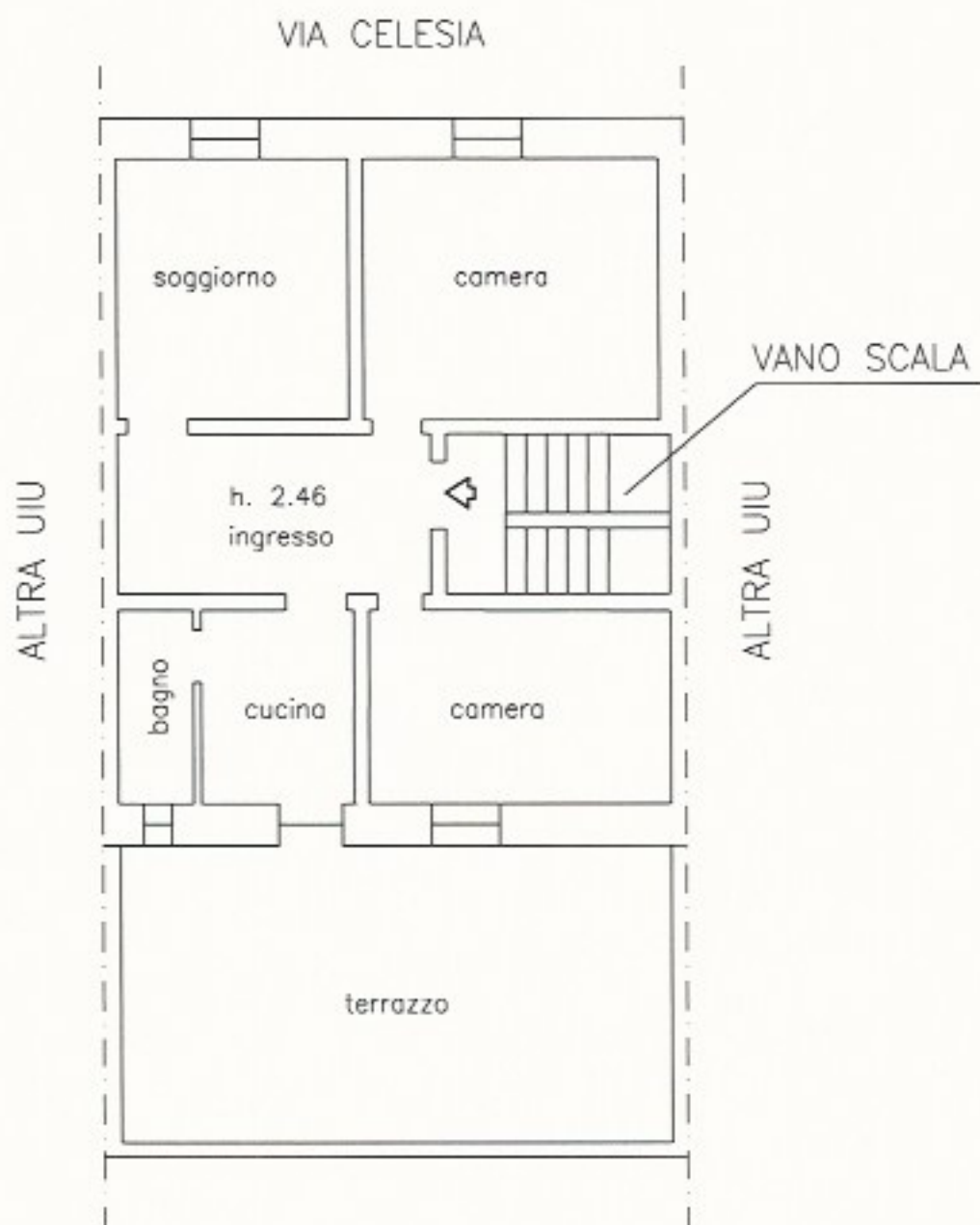


STATO ATTUALE: RILIEVO EFFETTUATO IL 03/11/2016

Arch. Angela ROSA
Corso Aurelio Saffi 7/8 - 16128 Genova - t. 010-5535056

p. secondo scala 1:100

1

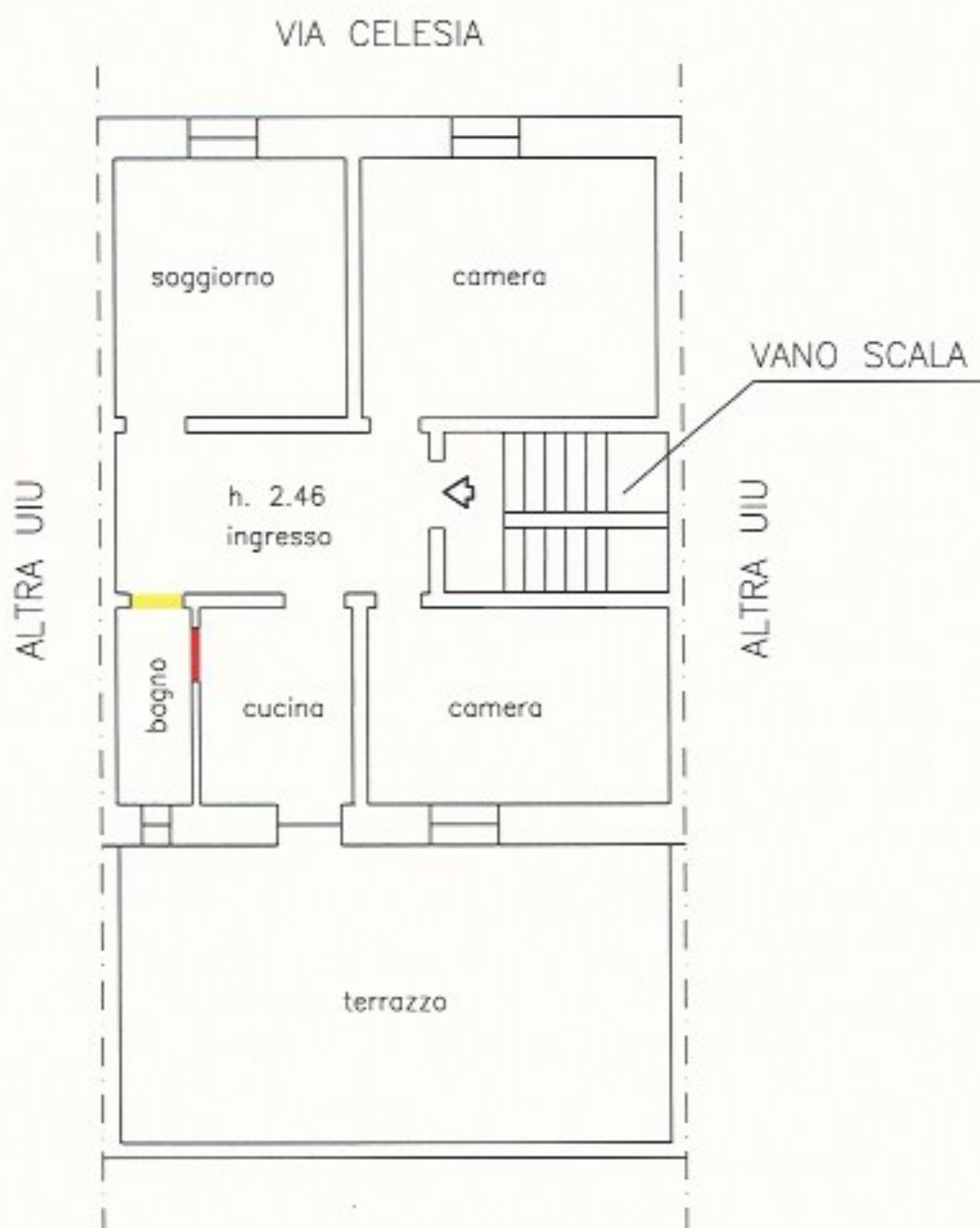


PLANIMETRIA CATASTALE

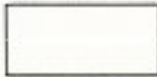

Arch. Angela ROSA
 Corso Aurelio Saffi 7/8 - 16128 Genova - t. 010-5535056

p. secondo scala 1:100

2



LEGENDA

-  demolizioni
-  costruzioni



CONFRONTO SITUAZIONE ATTUALE CON IL CATASTALE