

# **ALLEGATO 7**

## **Documentazione Fotografica**





Foto 1 – Prospetto Fabbricato

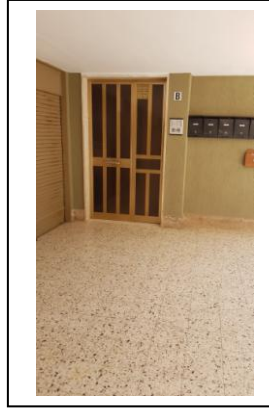


Foto 2 – Ingresso condominiale



Foto 3 – Ingresso abitazione

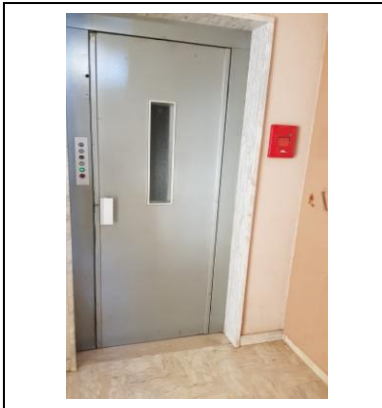


Foto 4 – Ascensore



Foto 5 – Soggiorno



Foto 6 – Soggiorno



Foto 7 – Corridoio





Foto 8 – Dettagli finiture Soggiorno

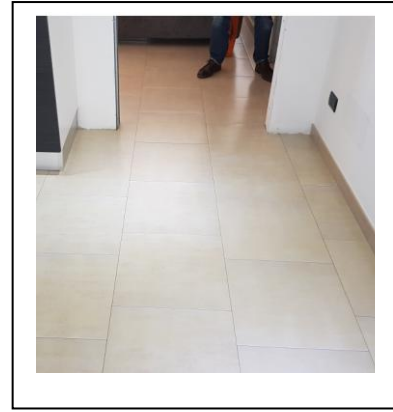


Foto 9– Pavimentazione



Foto 10 – Cucina-Pranzo

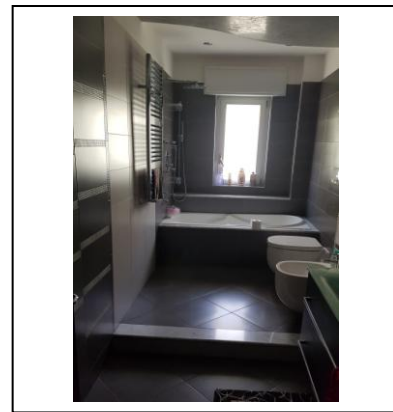


Foto 11 – Bagno

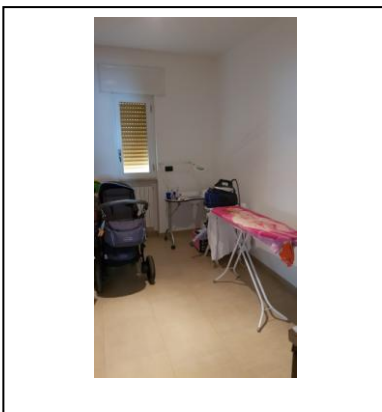


Foto 12 – Camera

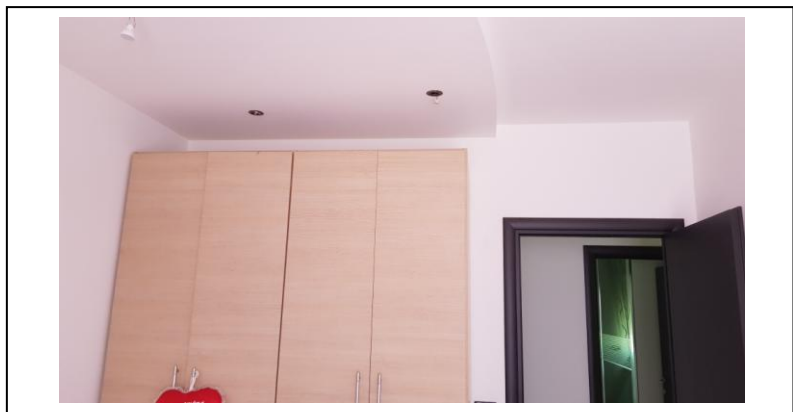


Foto 13 – Camera 2





Foto 14 – Camera matrimoniale



Foto 15 – Ripostiglio

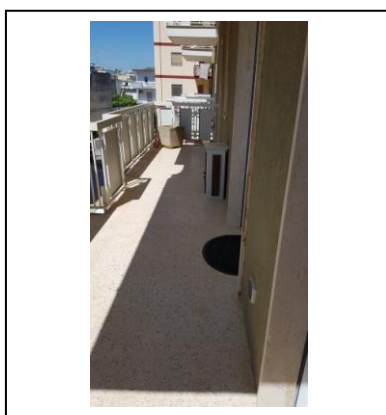


Foto 16 – Balcone (lato Sogg.)

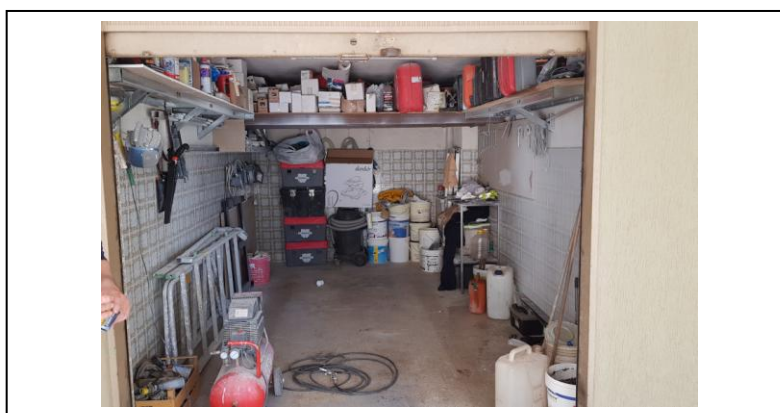


Foto 17 – Box auto piano terra



Foto 18 – Ingresso piano interrato

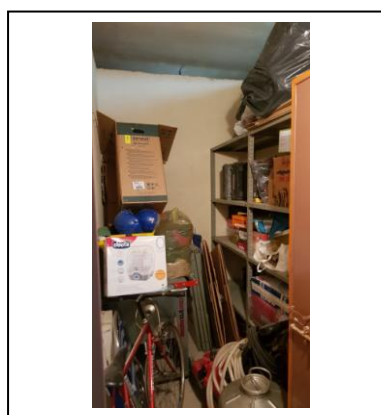


Foto 19 – Cantinola

