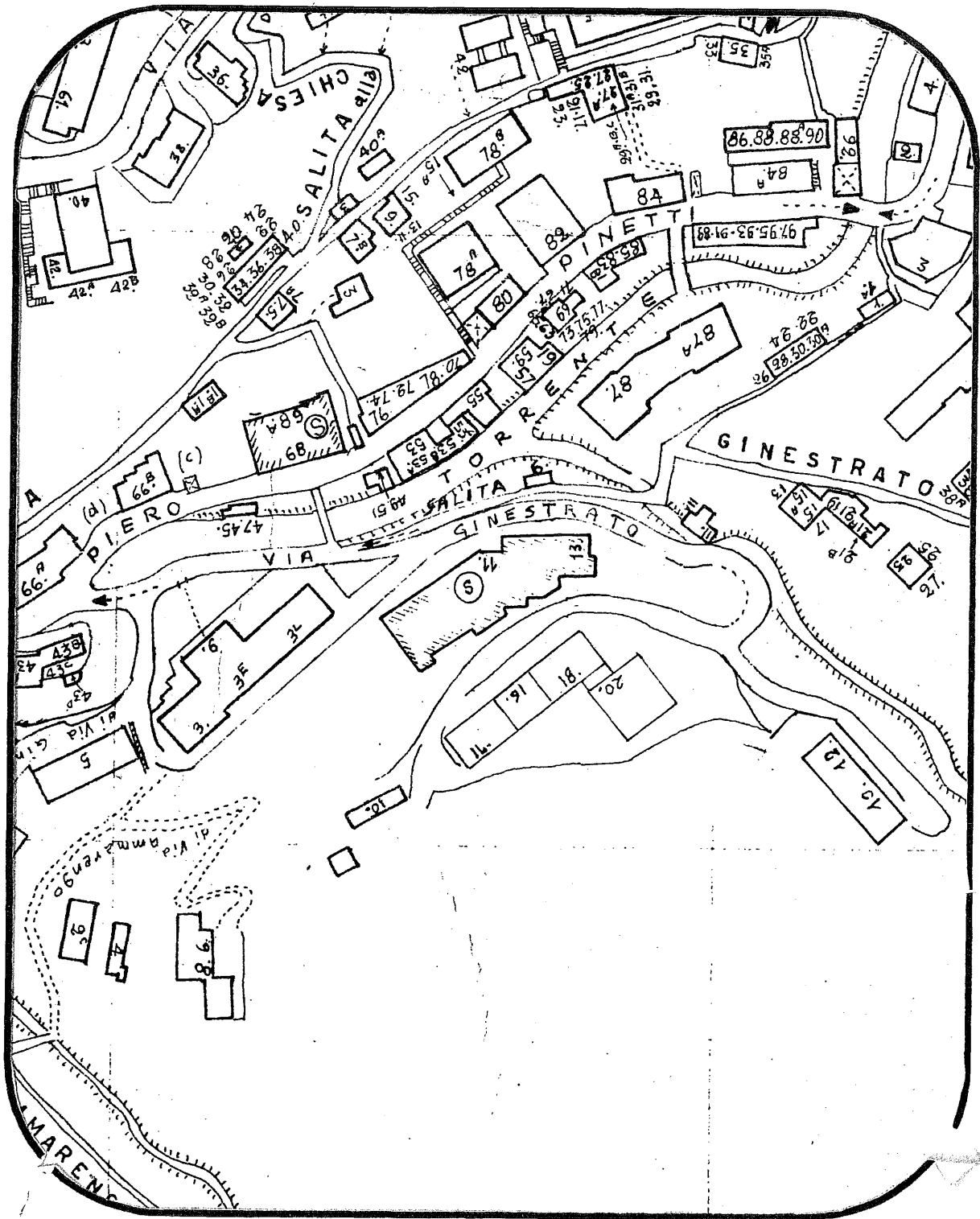


*ALLEGATO N. 1*

*LOCALIZZAZIONE*



# STRALCIO DI TOPONOMASTICA



Scala 1:2000

*ALLEGATO N. 2*

*ESTRATTO DI MAPPA  
CATASTO TERRENI*

*Scala 1:2000*





3-Mag-2017 17:5:29  
Prot. n. T305221/2017

Scala originale: 1:1000  
Dimensione cornice: 388.000 x 276.000 metri

Comune: GENOVA/A  
Foglio: 25 All: C

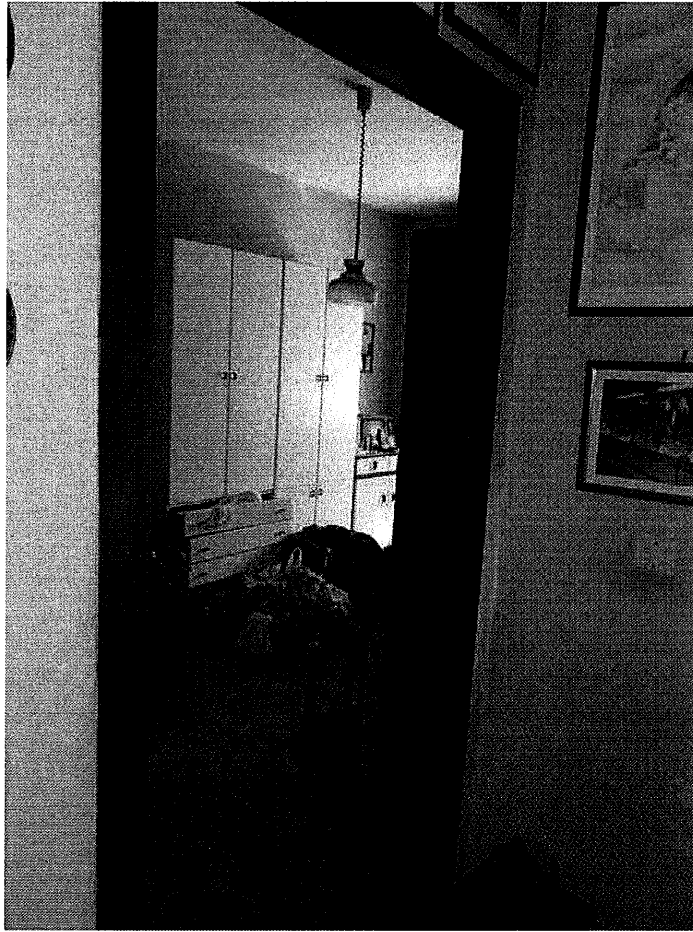
N=4700

*ALLEGATO N. 3*

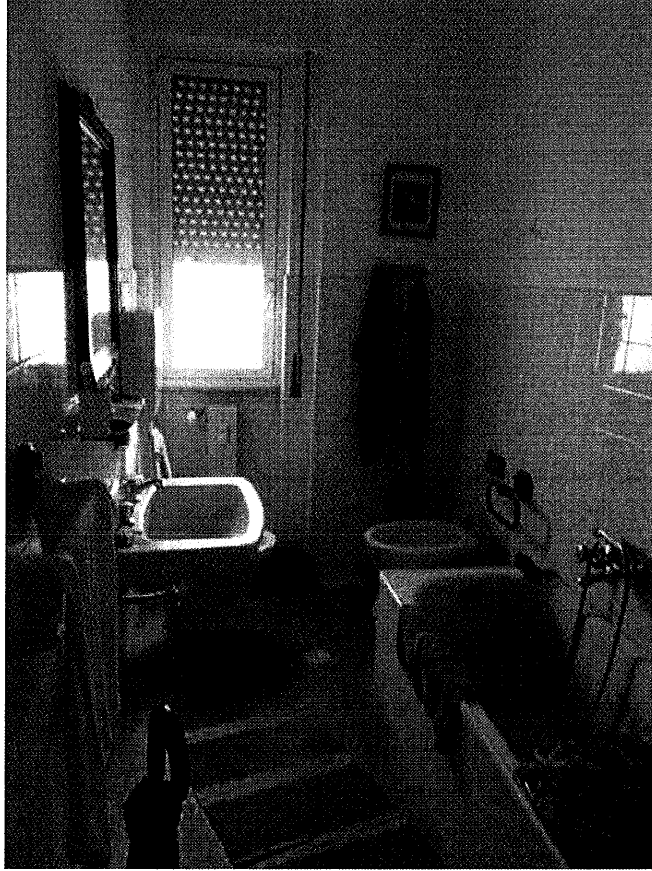
*DOCUMENTAZIONE FOTOGRAFICA*



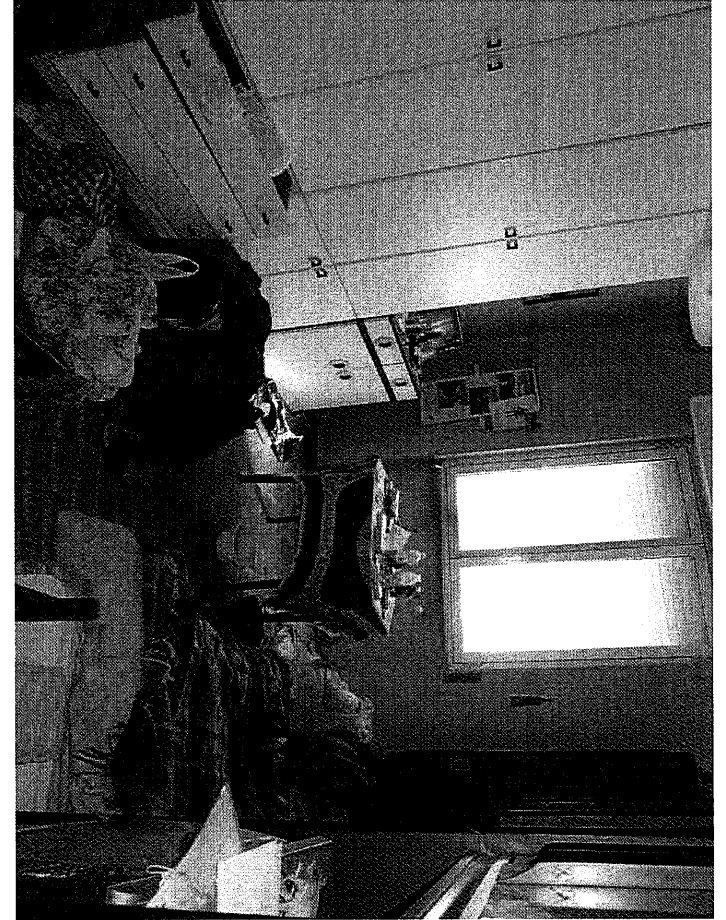
APPARTAMENTO INT. 6 - INTERNI

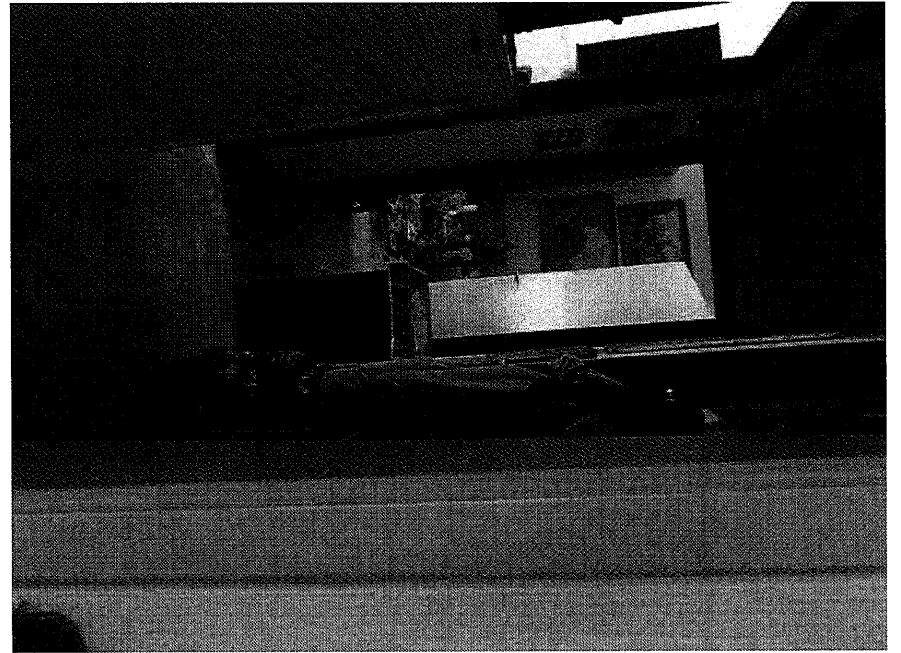






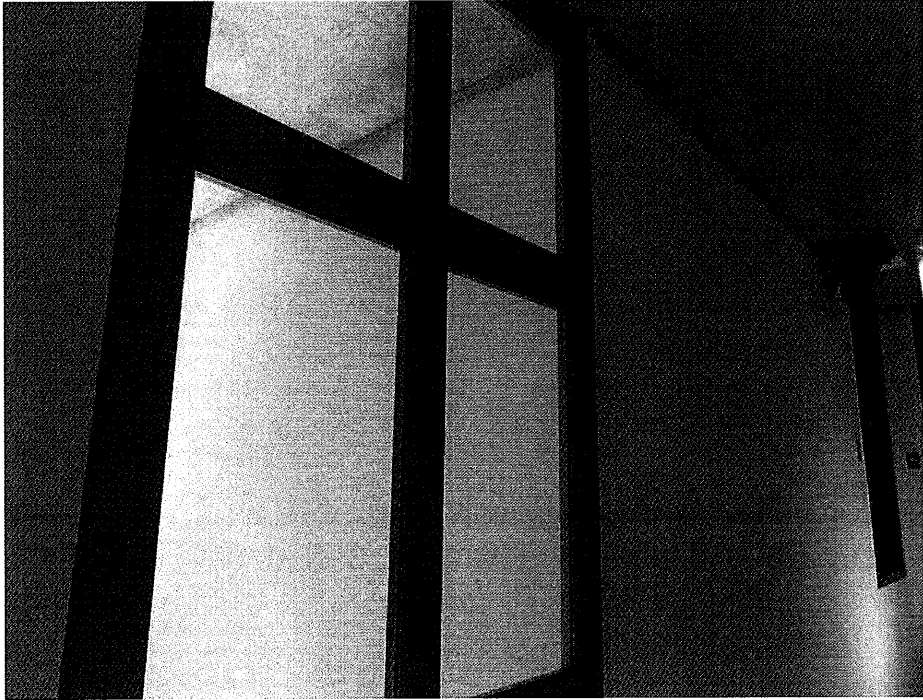






CORRIDOIO CONDOMINIALE DEL PRIMO PIANO







VANO SCALE





INGRESSO PIANO FONDI



PORTICATO



POSTO AUTO SCOPERTO







VISTA ESTERNO EDIFICIO



