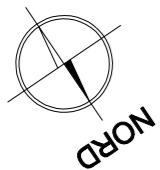


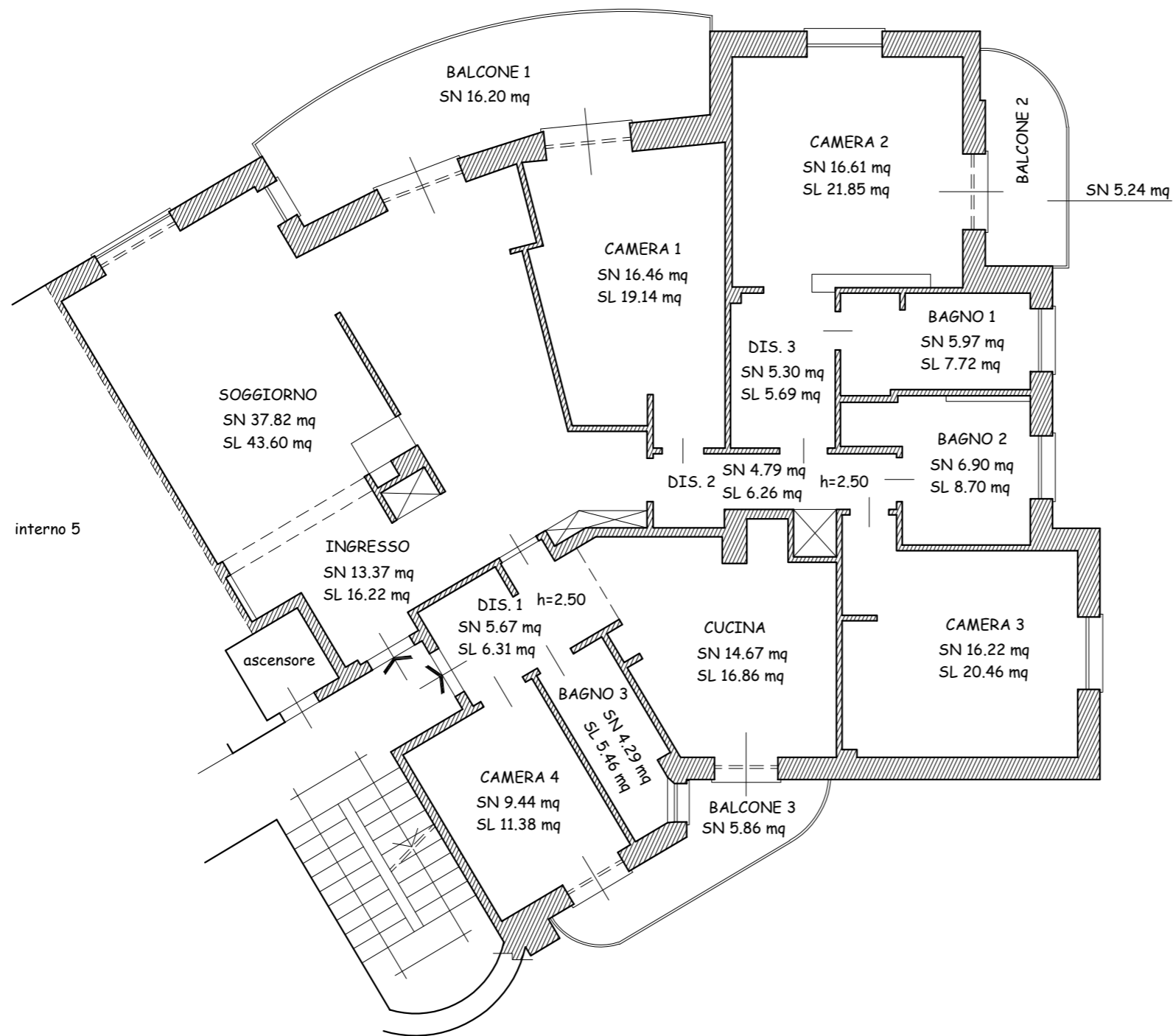
Comune di Genova - Viale Arezzo n. 5C int. 6  
 NCEU sez. GEB foglio 61 particella 1006 sub. 6



Piano Secondo - h=3.05 m

Superficie netta (SN) = 157.51 mq

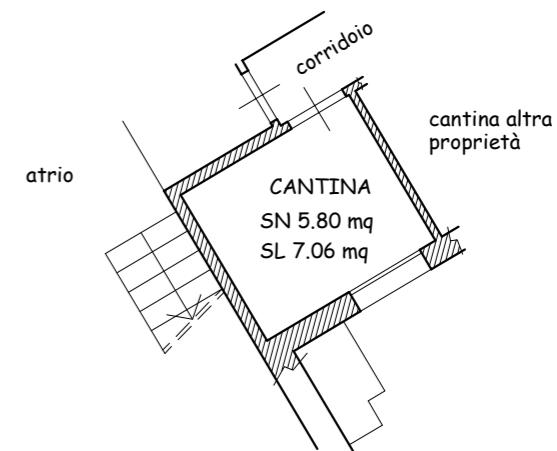
Superficie lorda (SL) = 189.65 mq



Piano Terra - h=2.95 m

Superficie netta (SN) = 5.80 mq

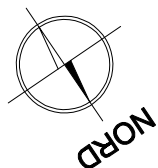
Superficie lorda (SL) = 7.06 mq



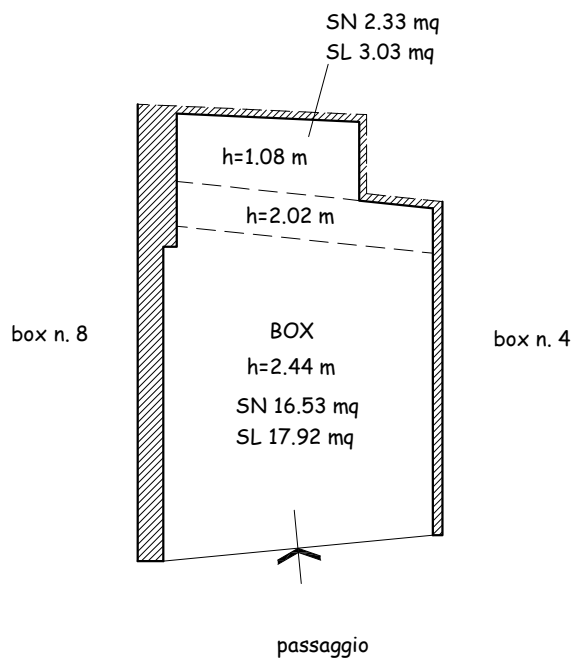
Firmato Da: CROVO CLAUDIO Emesso Da: ARUBAPEC S.P.A. NG CA.3 Serial#: 32f3441c180ba8655a40fb8683fd56be

Comune di Genova - Viale Arezzo n. 5C

NCEU sez. GEB foglio 61 particella 1006 sub. 15



## Piano Primo Sottostrada



Tribunale di Genova  
R.G. Es. n. 821/2017  
DISEGNO IN SCALA 1:100