

1 - accesso carrabile



2 - accesso carrabile



### 3 - veduta panoramica edificio



### 4 - percorso pedonale di accesso all'immobile



## 5 - accesso pedonale all'immobile



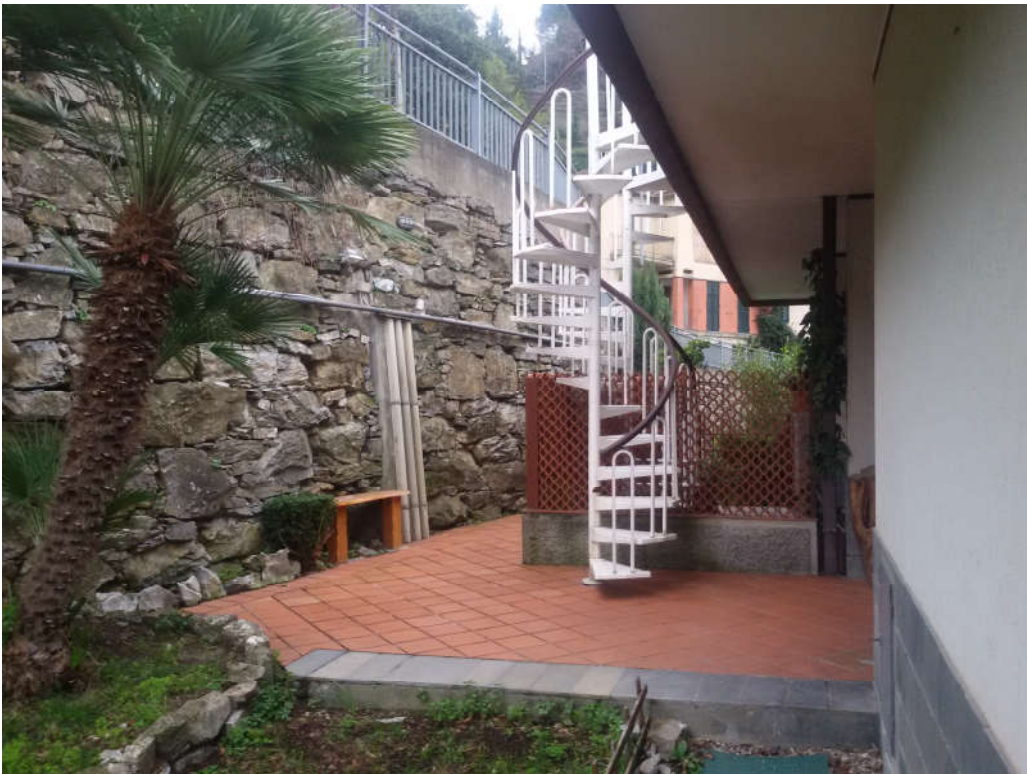
## 6 - ingresso appartamento



7- area pertinenziale lato est



8 - area pertinenziale lato est



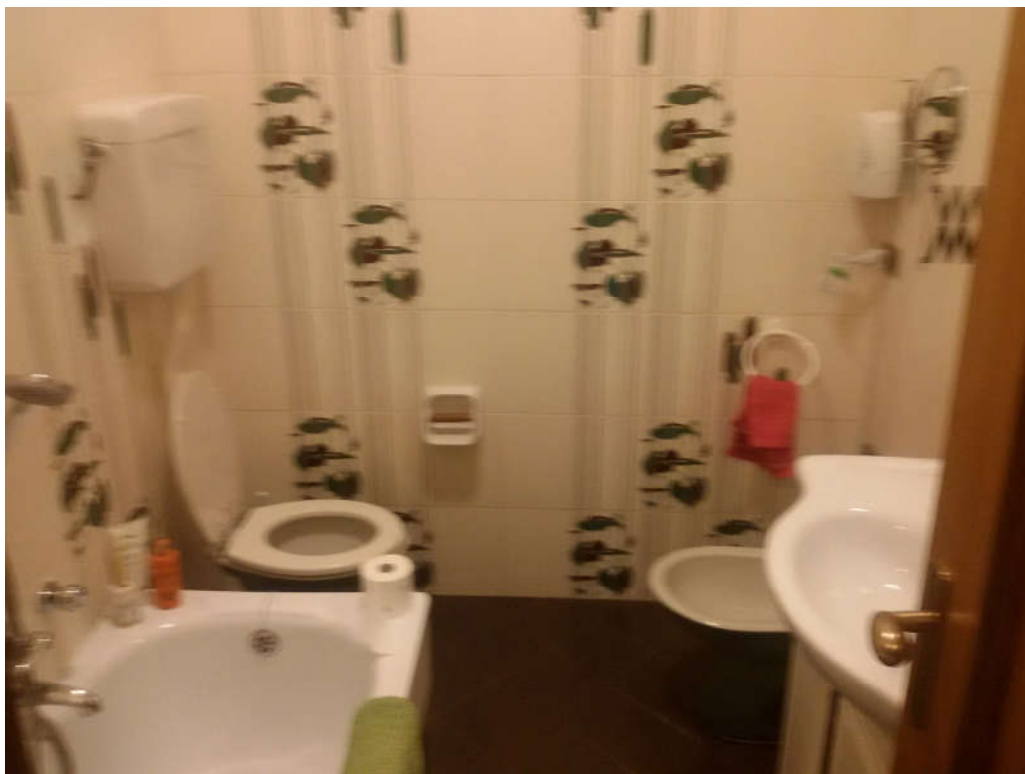
## 9 - ripostiglio



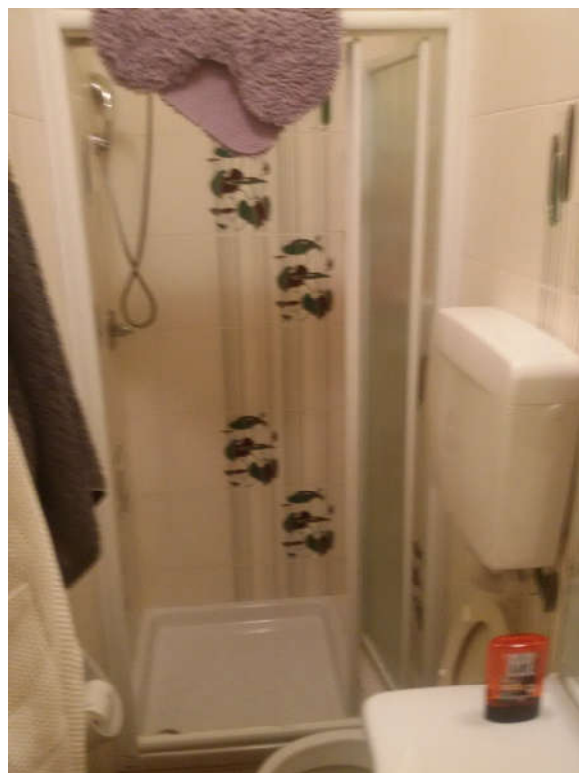
## 10 - corridoio



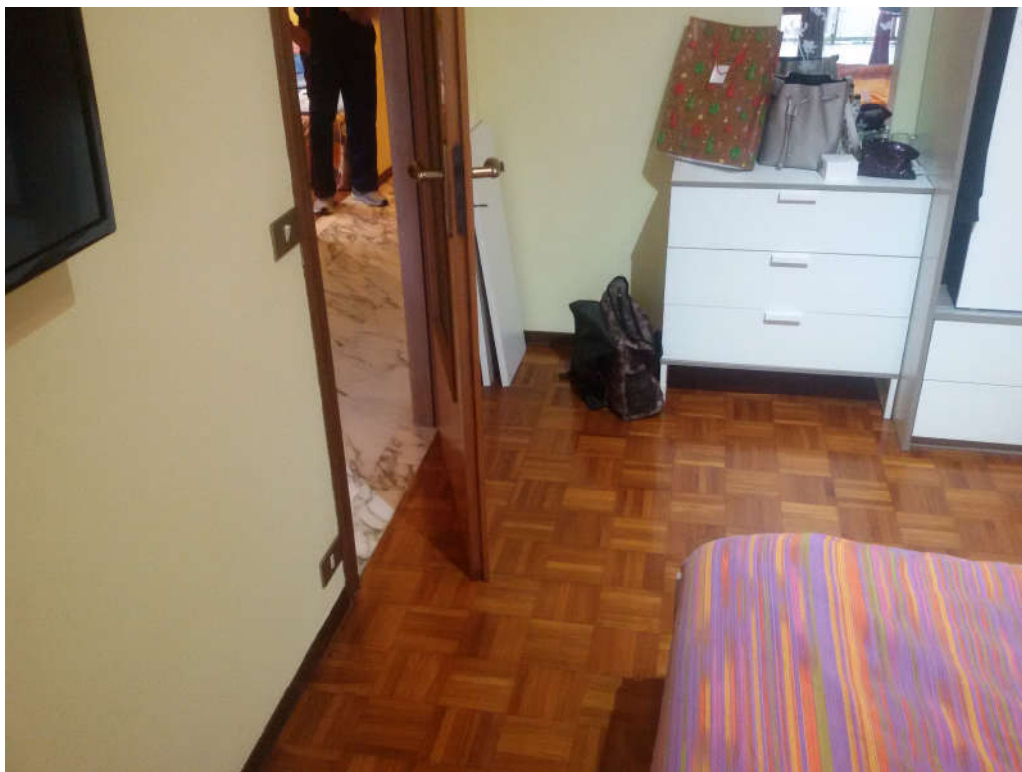
11 - bagno principale



12 - servizio secondario



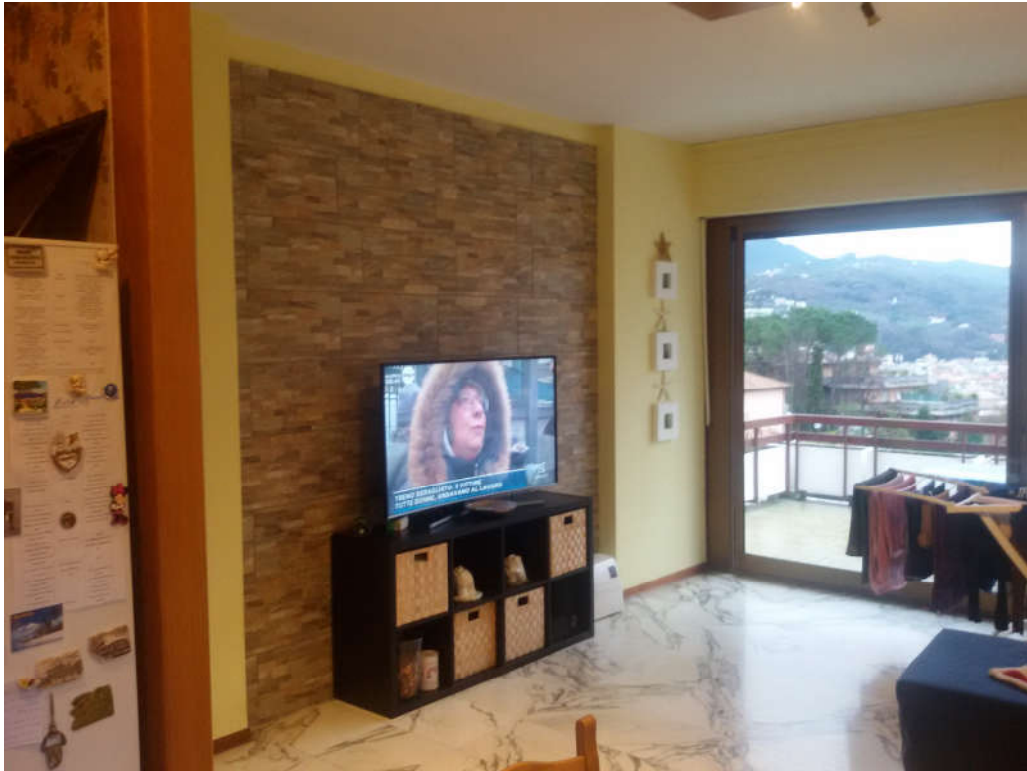
13 - camera lato ovest



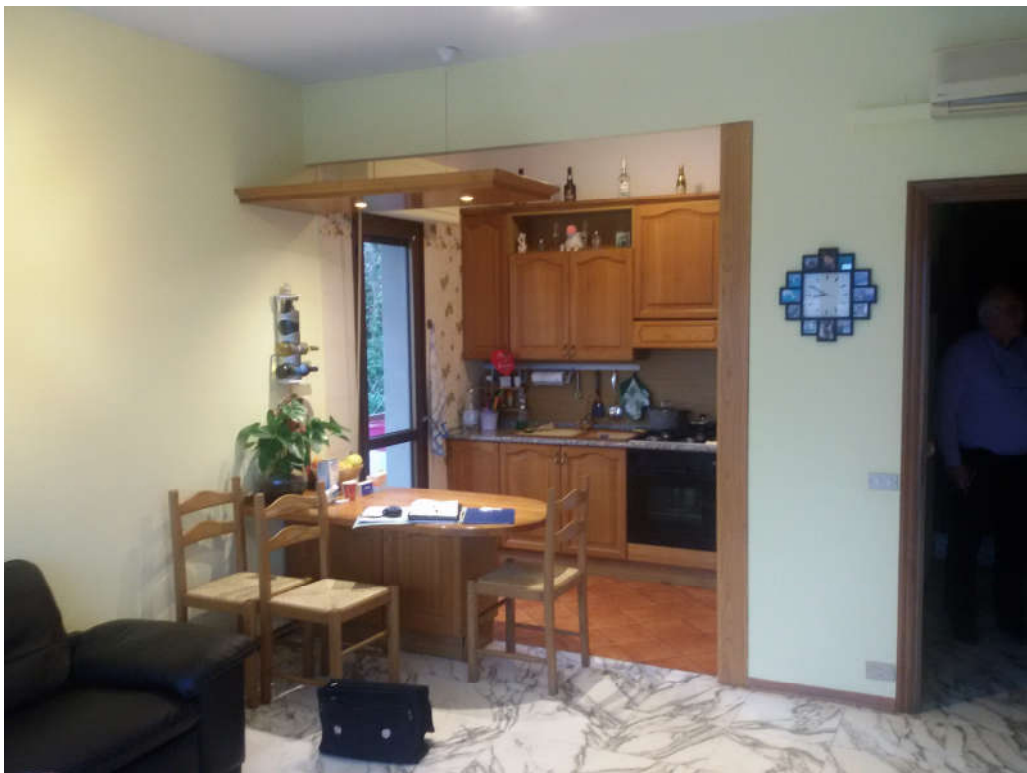
14 - terrazzo lato ovest



15 - soggiorno

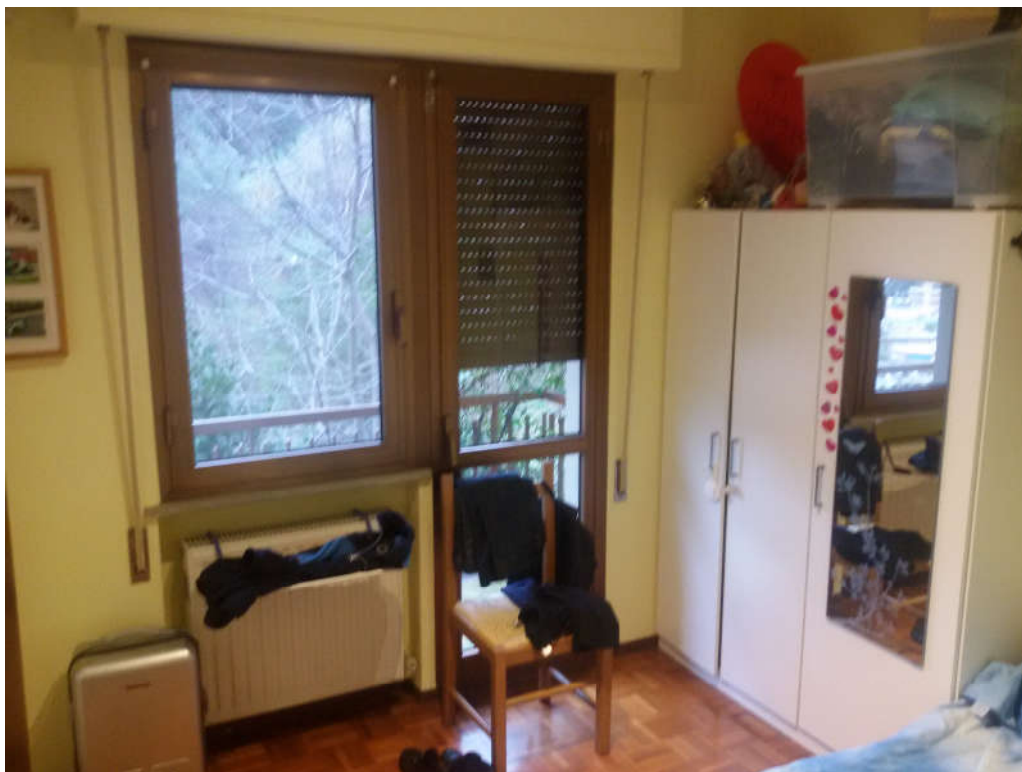


16 - cottura





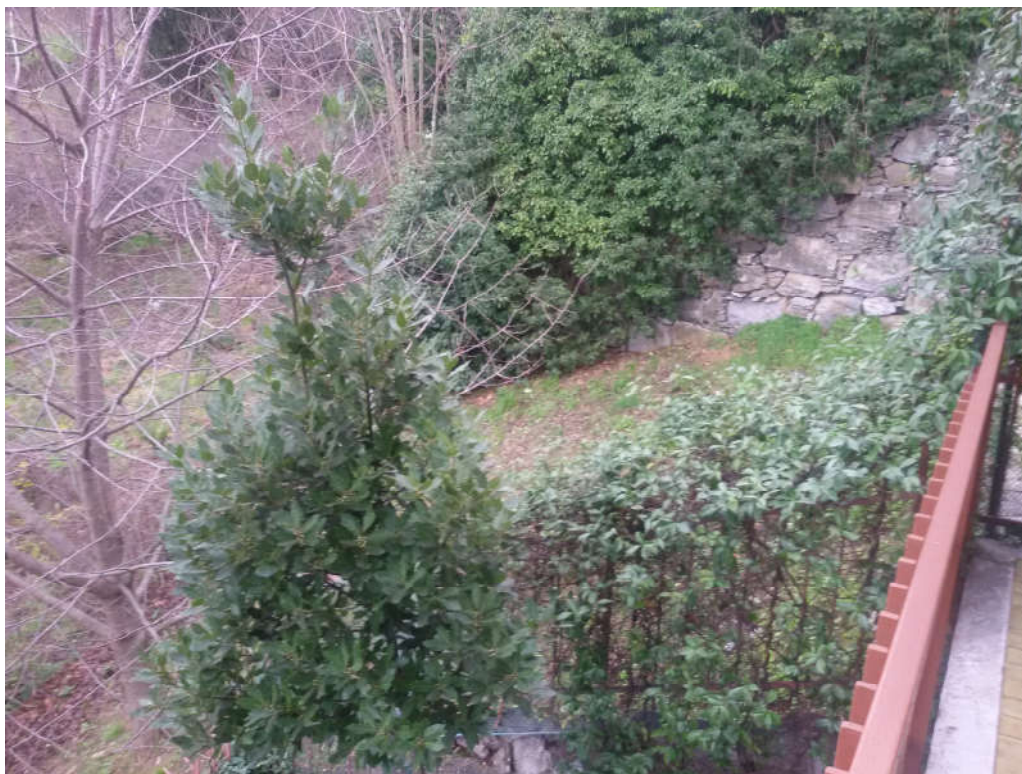
17 - camera lato nord



18 - lastrico solare



19 - area urbana



20 - posto auto

