



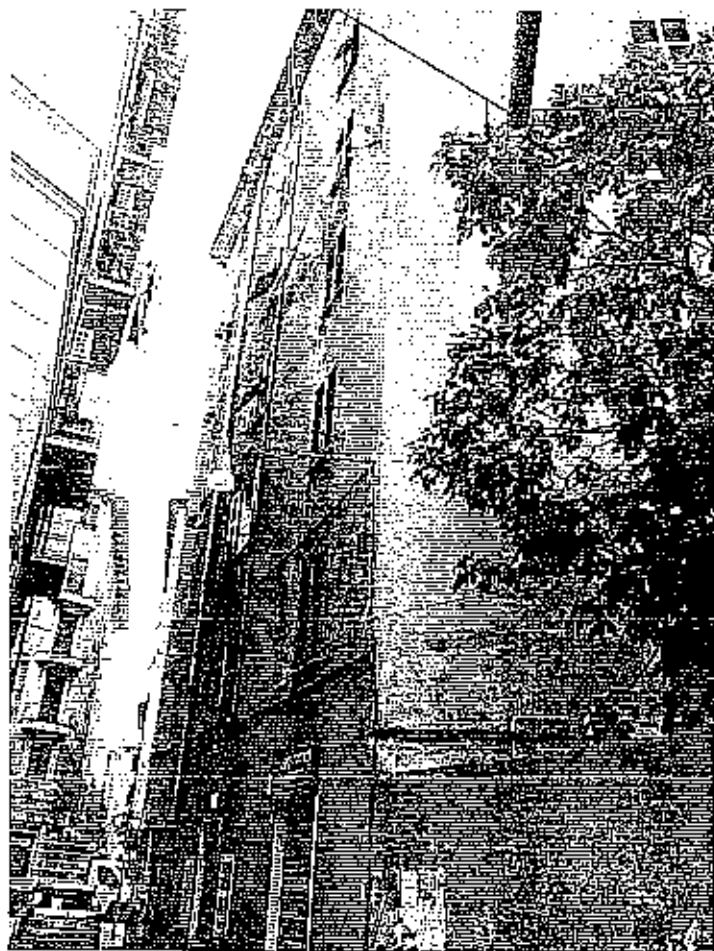
1

1) Prospetto Principale su Via Teresio M. Canepari



2

2) Prospetto Nord



3) Prospetto su Via S. Bartolomeo della Certosa

3



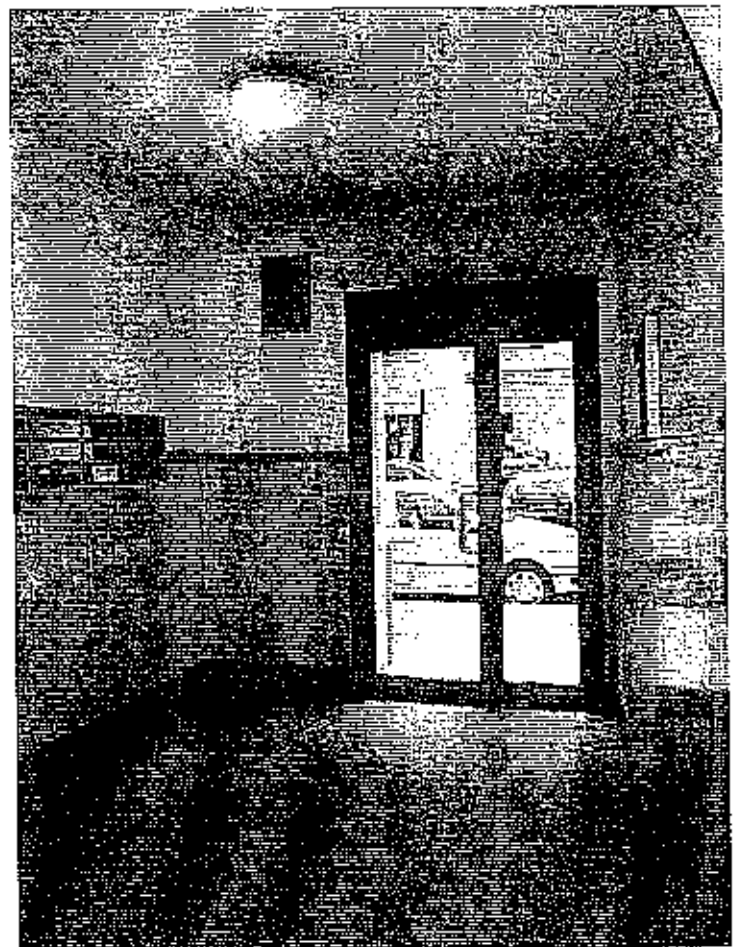
4) Prospetto Est

4



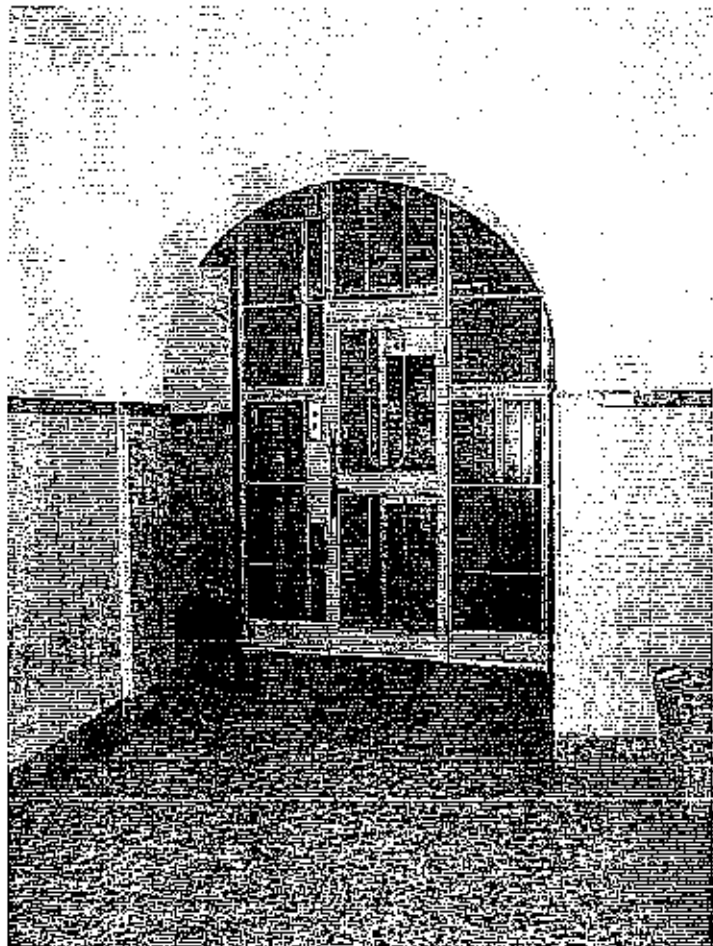
5

5) Portone di ingresso



6

6) Particolare Atrio



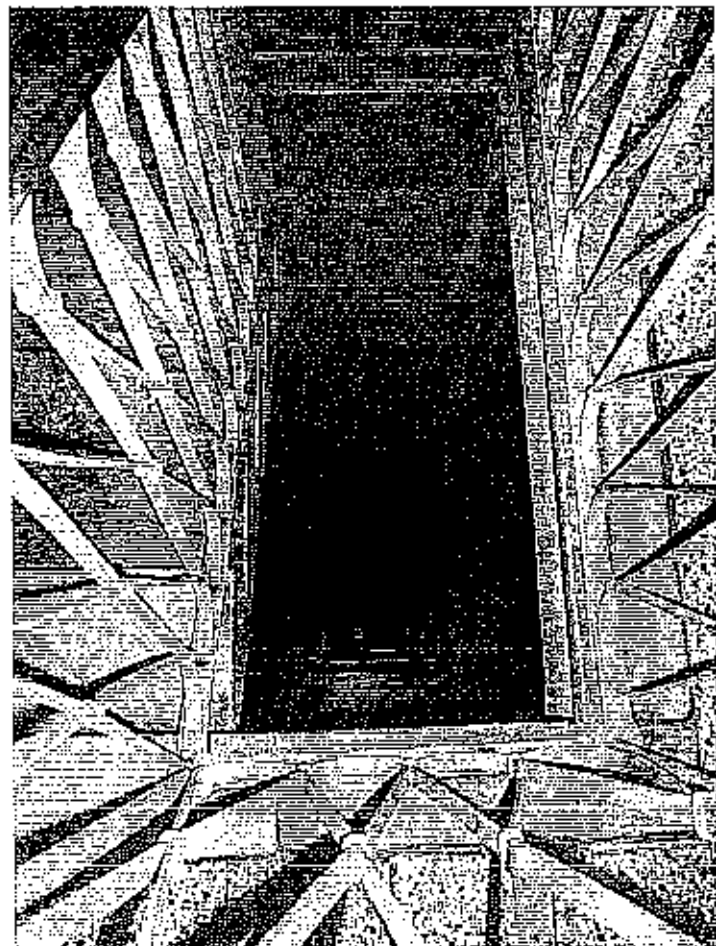
7

7) Particolare Ascensore



8

8) Particolare Scale



9

9) Particolare vano scala



10

10) Portoncino caposcala



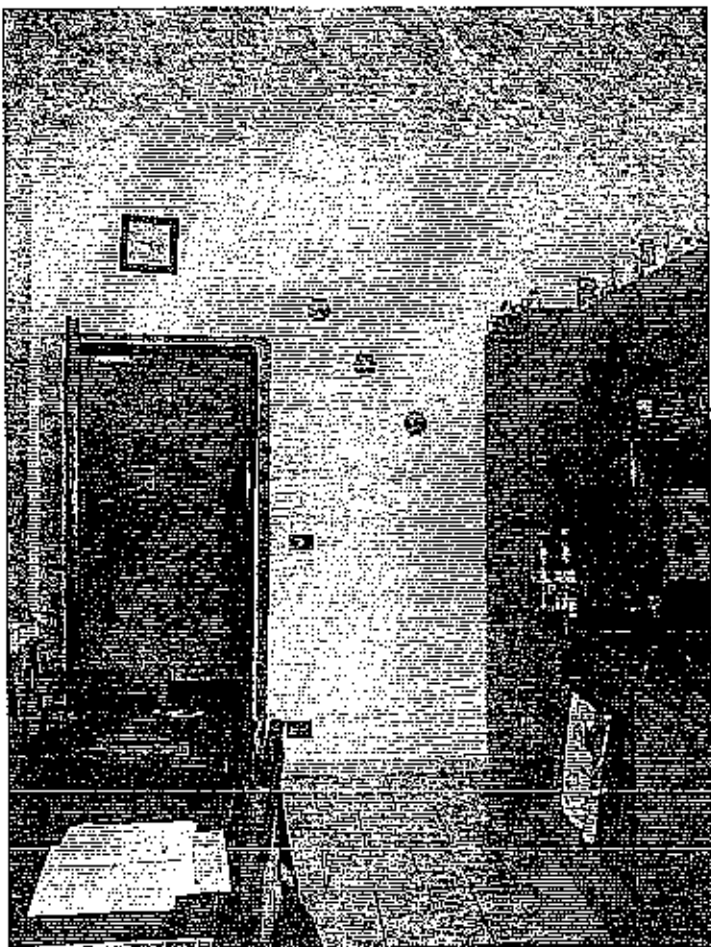


11) Ingresso

11

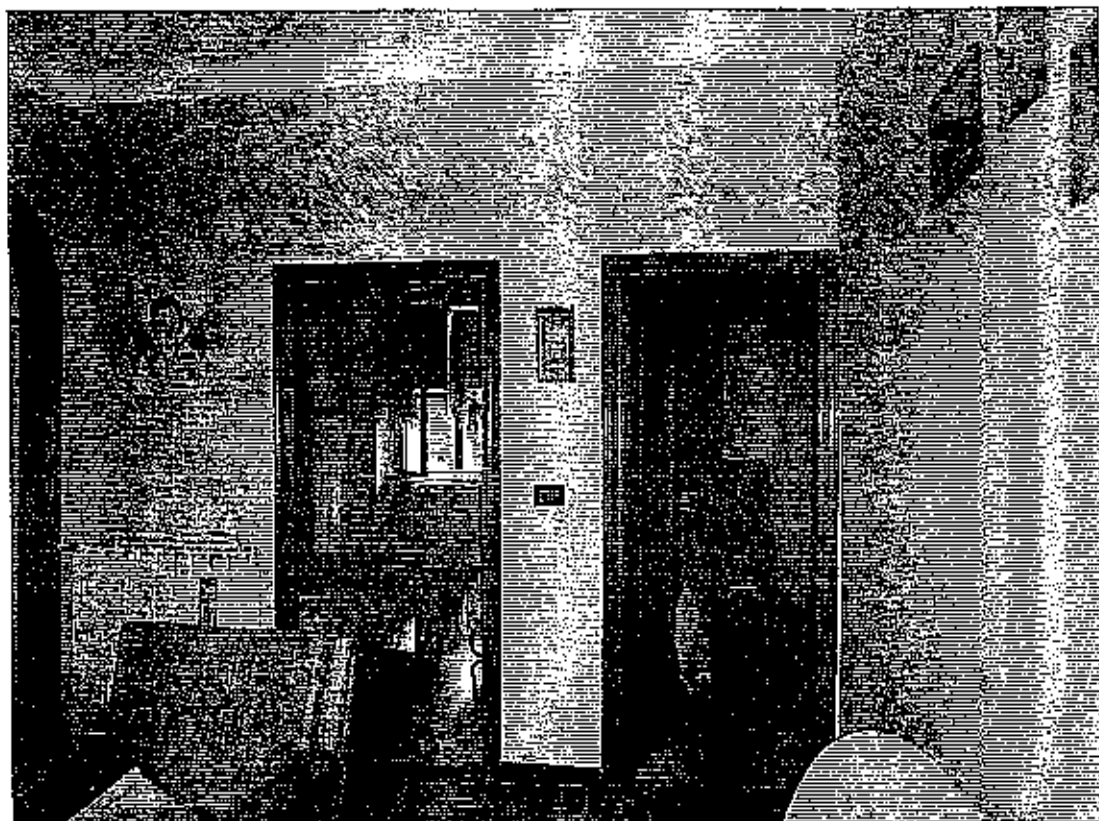


12  
12) Locale Cucina



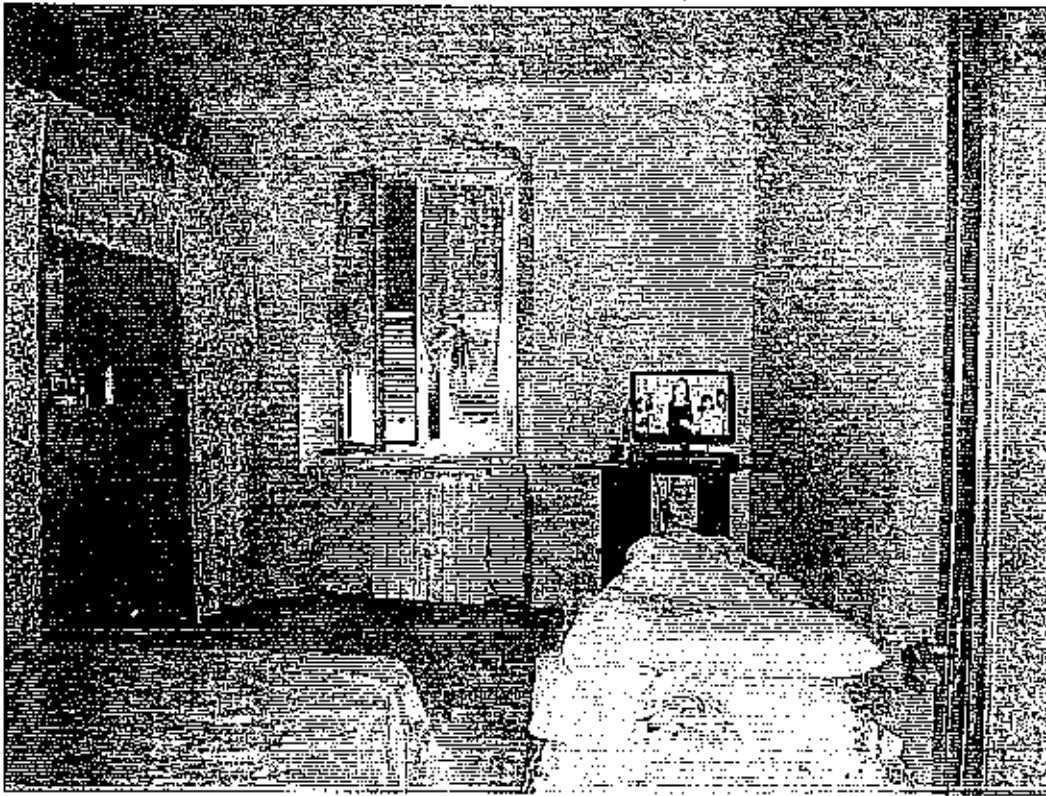
13

13) Particolare Cucina



14

14) Disimpegno



15) Camera 1

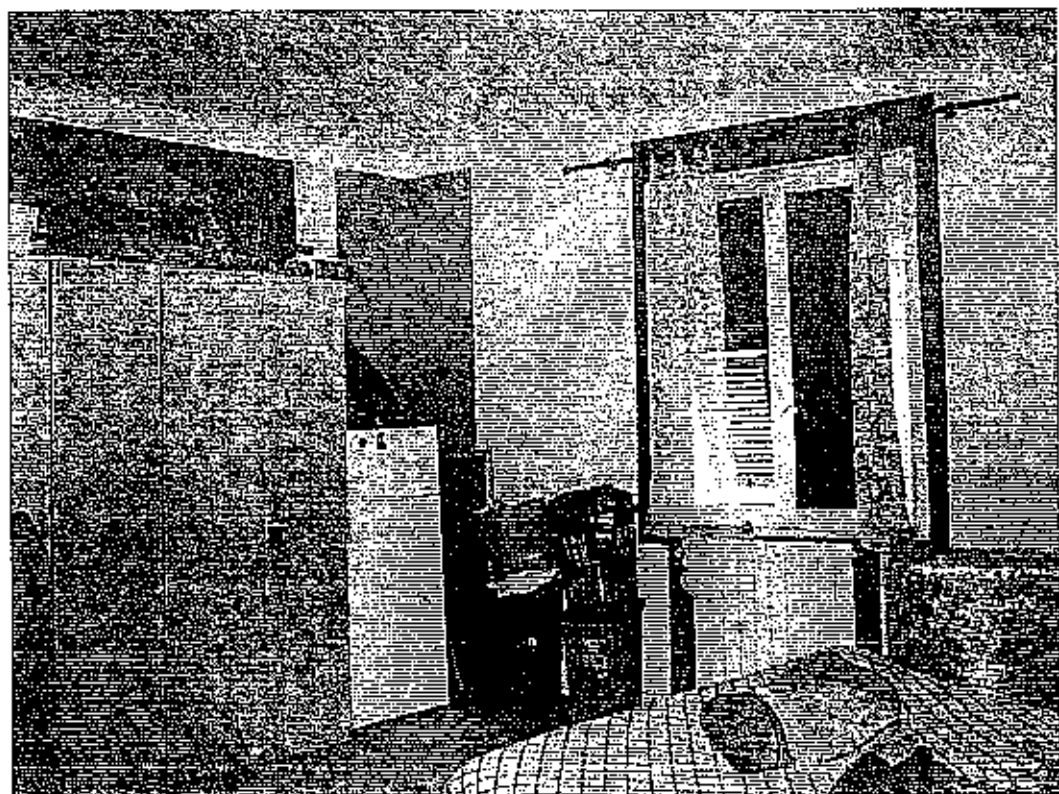
15



16) Particolare Camera 1

16





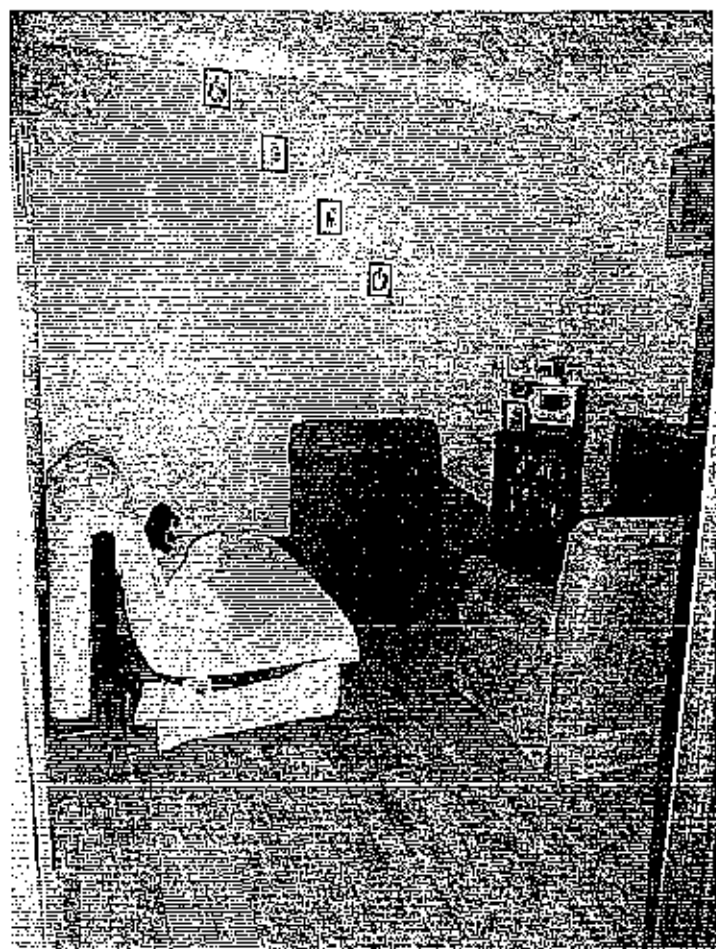
17) Camera 2

17



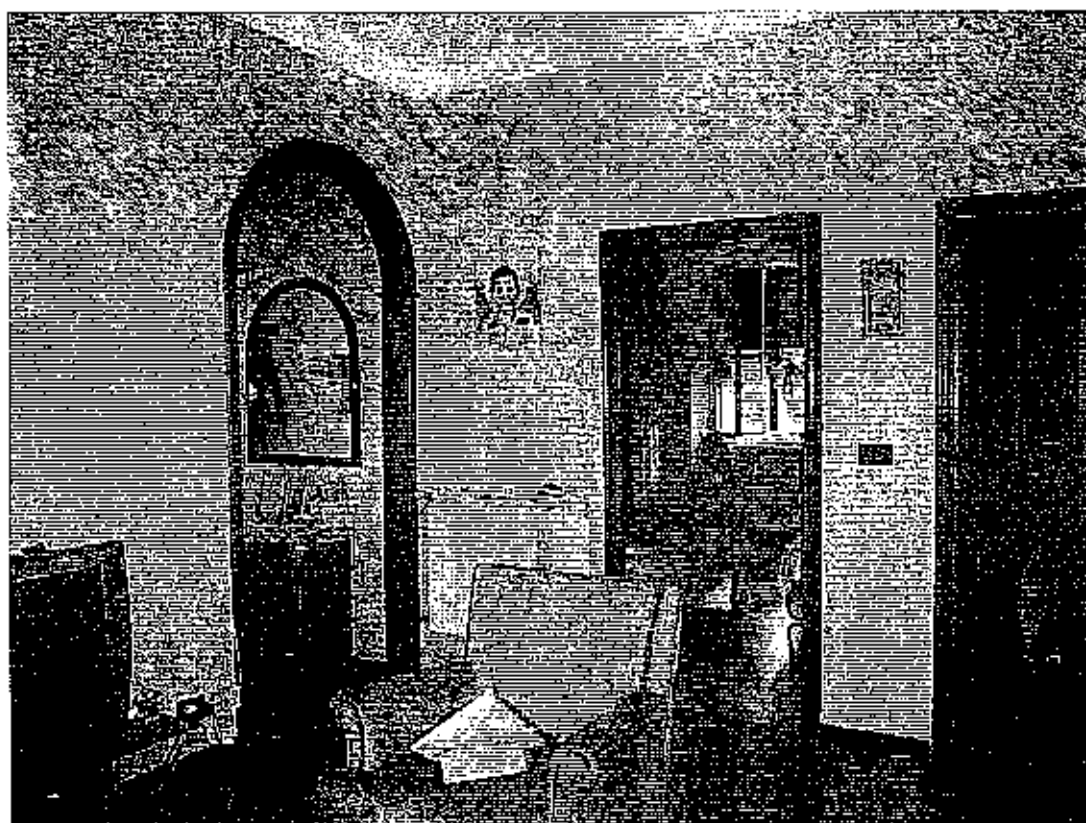
18) Particolare Camera 2

18



19) Disimpegno

19



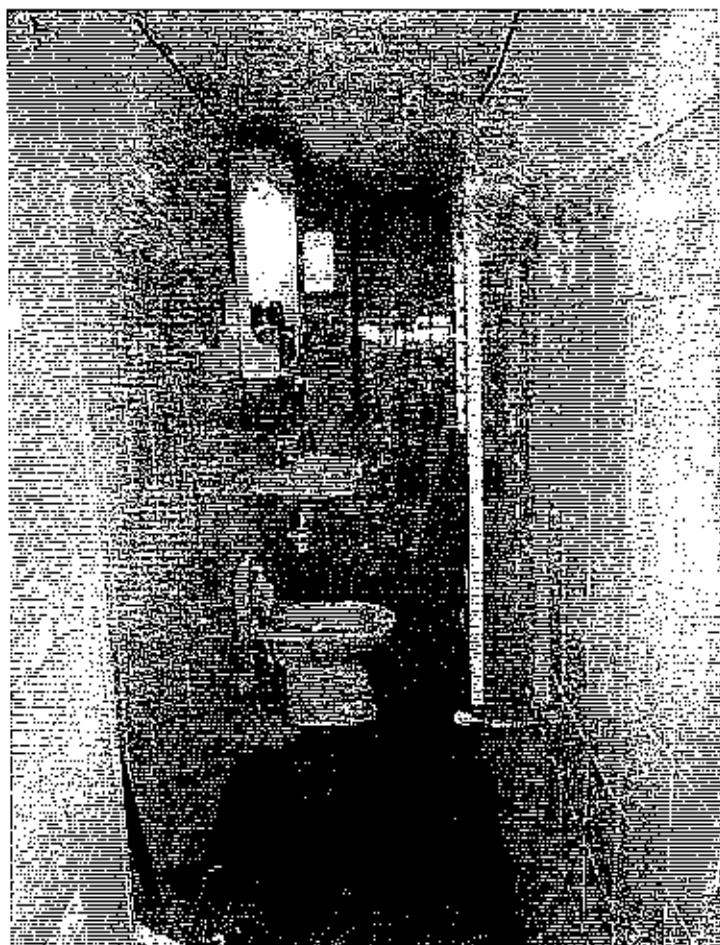
20) Particolare disimpegno

20



21

21) Corridoio



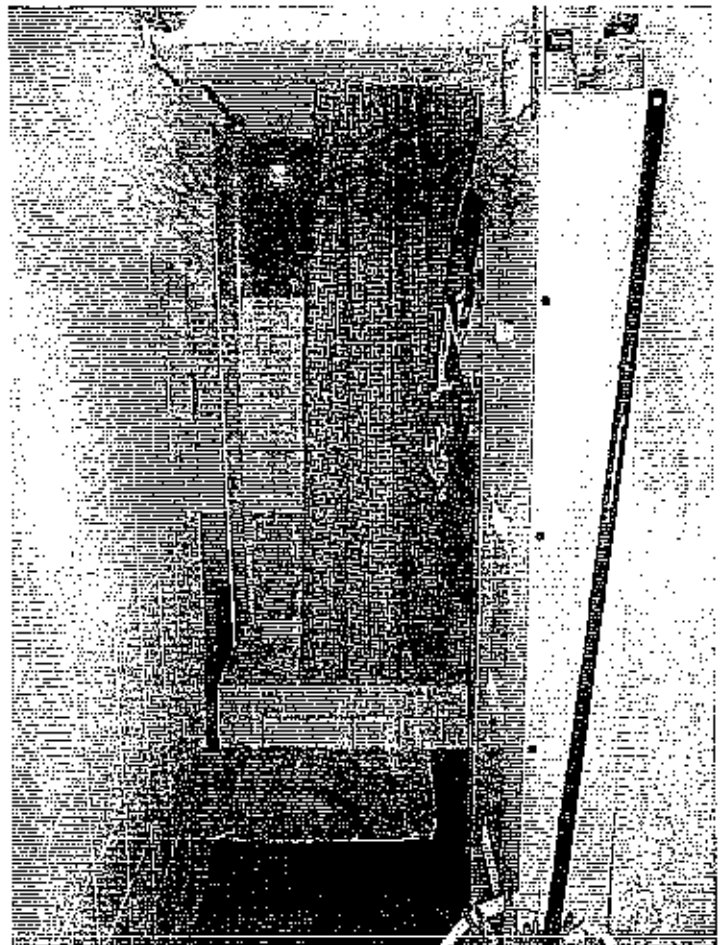
22

22) Locale Bagno



23

23) Particolare Locale Bagno



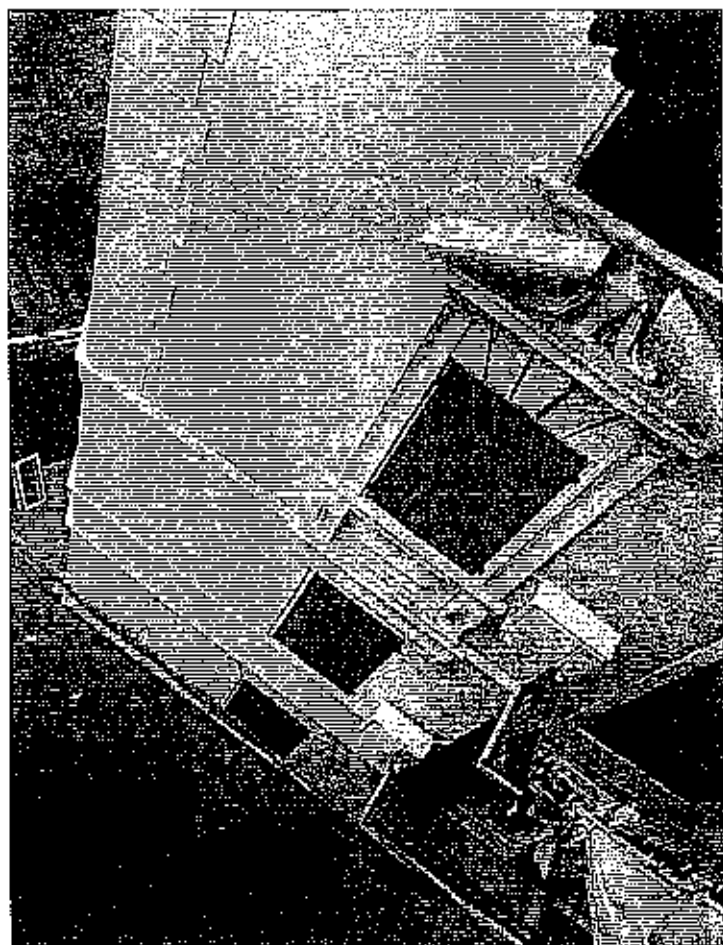
24

24) Particolare locale Bagno



25

25) Veduta su Ferrovia del Campasso



26

26) Veduta su Via S. Bartolomeo della Certosa