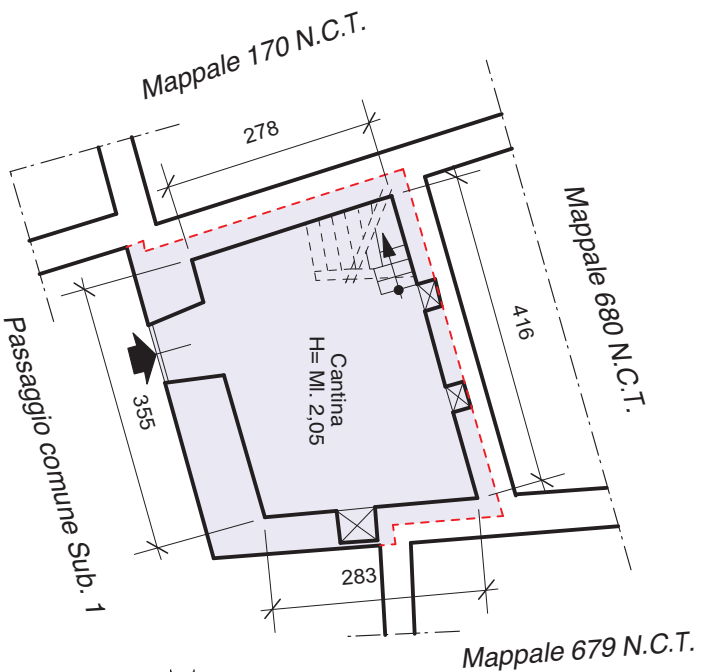
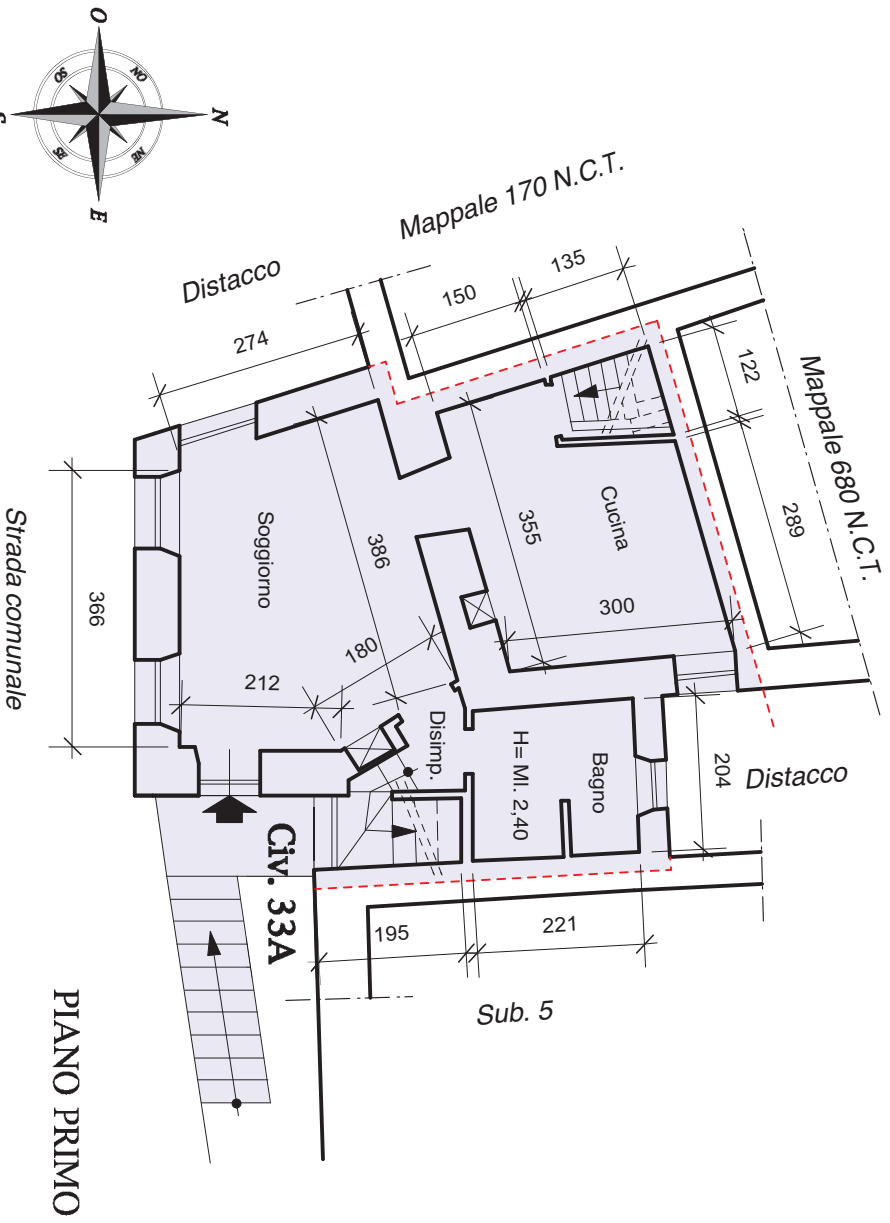


COMUNE DI BORZONASCA (GE)  
APPARTAMENTO LOC. BERTIGARO CIV. 33A  
PIANO T-1-2

PLANIMETRIA STATO ATTUALE  
Scala 1: 100



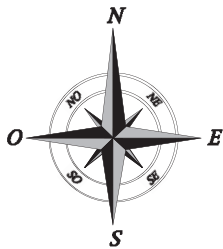
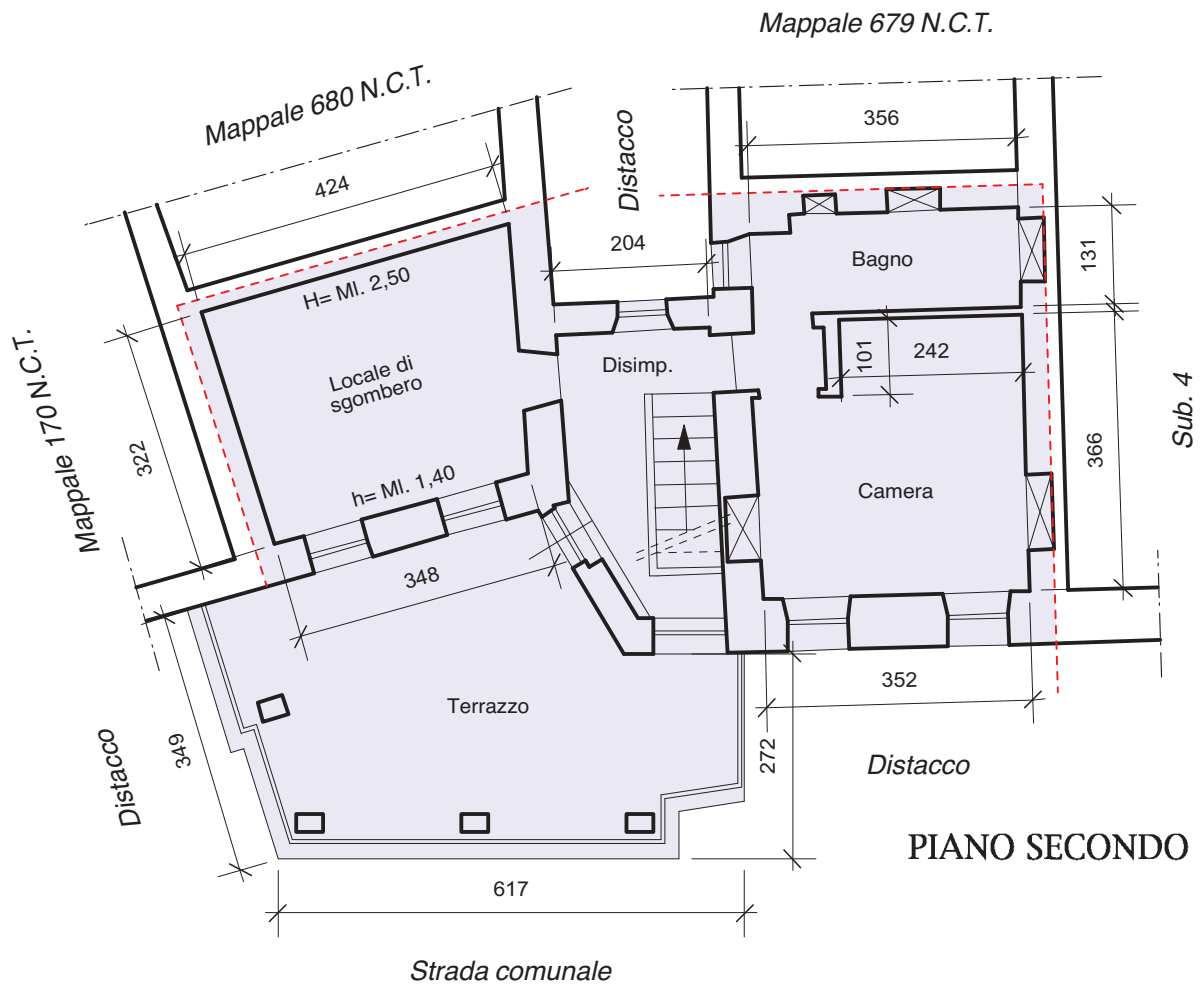
PIANO TERRENO

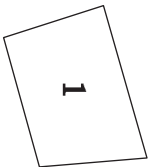


PIANO PRIMO

COMUNE DI BORZONASCA (GE)  
APPARTAMENTO LOC. BERTIGARO CIV. 33A  
PIANO T-1-2

PLANIMETRIA STATO ATTUALE  
Scala 1: 100

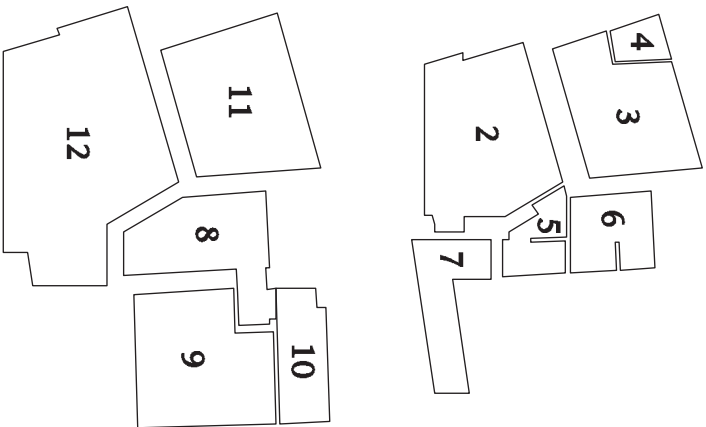




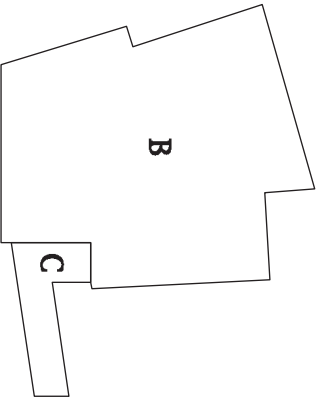
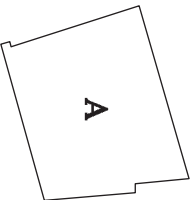
**SUPERFICI UTILI NETTE**

|                         |       |       |
|-------------------------|-------|-------|
| 1 = Cantina             | = mq. | 10,75 |
| 2 = Soggiorno           | = mq. | 13,75 |
| 3 = Cucina              | = mq. | 9,75  |
| 4 = Scala               | = mq. | 1,45  |
| 5 = Disimpegno          | = mq. | 2,70  |
| 6 = Bagno               | = mq. | 4,30  |
| 7 = Scala               | = mq. | 4,90  |
| 8 = Disimpegno          | = mq. | 8,30  |
| 9 = Camera              | = mq. | 11,90 |
| 10 = Bagno              | = mq. | 4,55  |
| 11 = Locale di sgombero | = mq. | 12,45 |
| 12 = Terrazzo           | = mq. | 24,30 |

**TOTALE** = mq. 109,15



**SCHEMA CALCOLO SUPERFICI UTILI NETTE E LORDE**  
Scala 1:200



**SUPERFICI LORDE**

|                      |       |               |
|----------------------|-------|---------------|
| A = Cantina          | = mq. | 17,15         |
| A = Appartamento     | = mq. | 100,65        |
| A = Terrazzo e Scala | = mq. | 29,20         |
| <b>TOTALE</b>        | = mq. | <b>147,00</b> |

