

## La strada di accesso





Area esterna destinata a posti auto (subalterni 5, 6 e 7)



## I prospetti del fabbricato



## Subalterno 1





**Locali al piano seminterrato**

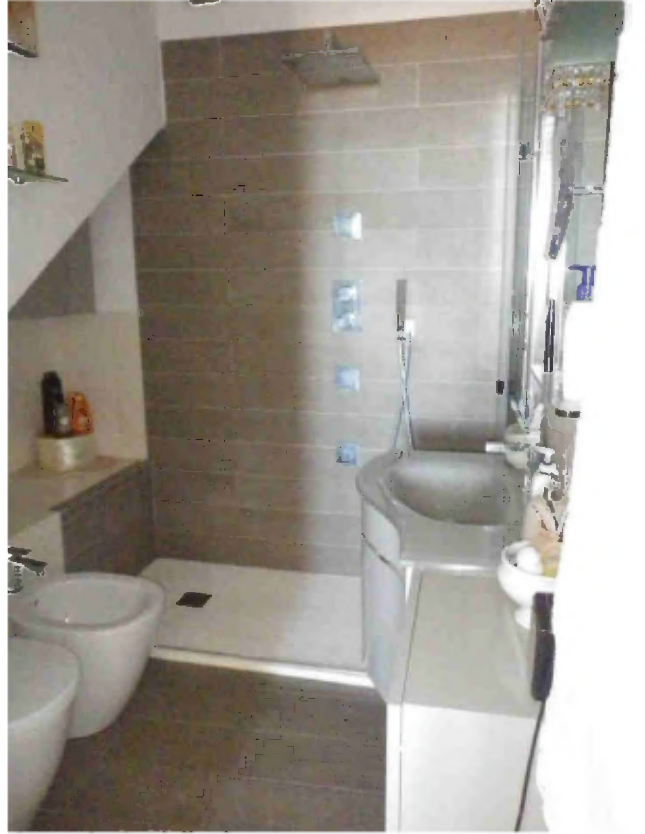
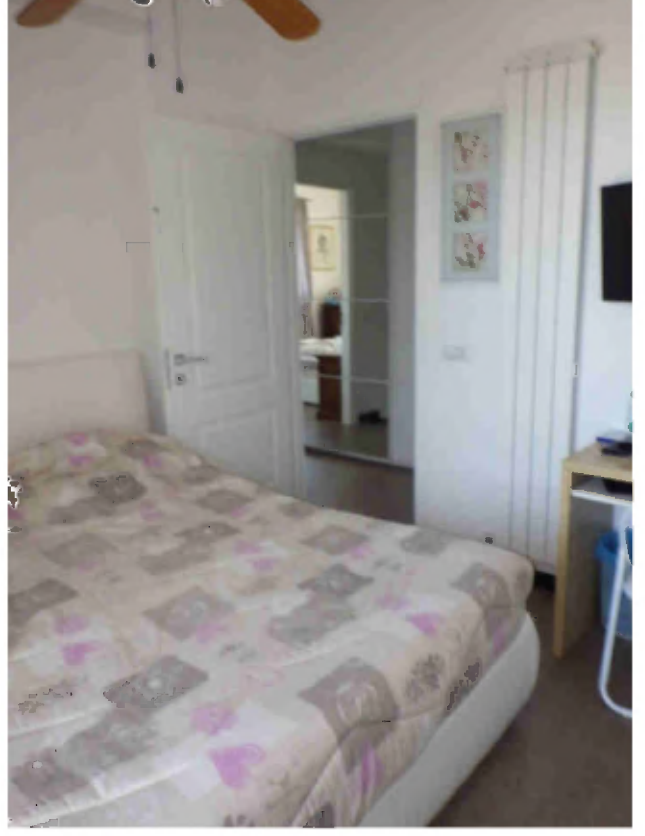
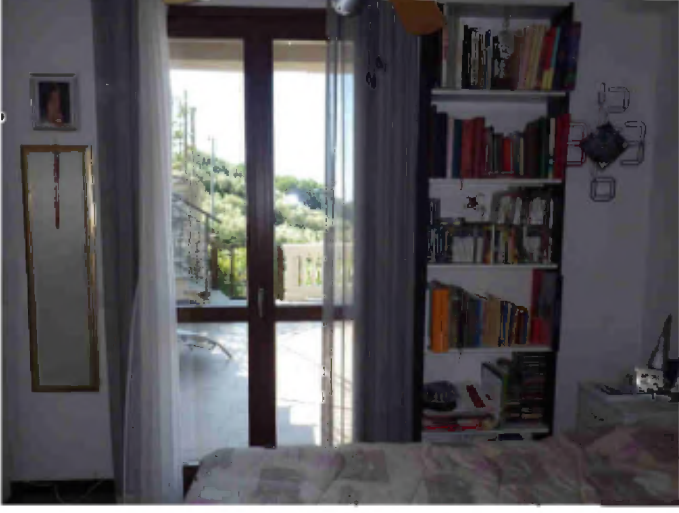


**Cantina abusivamente utilizzata come cucina**

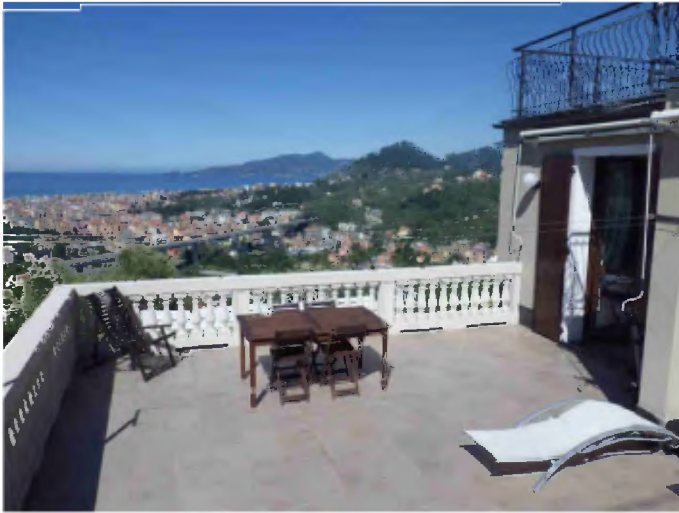


**Locali al piano terra**



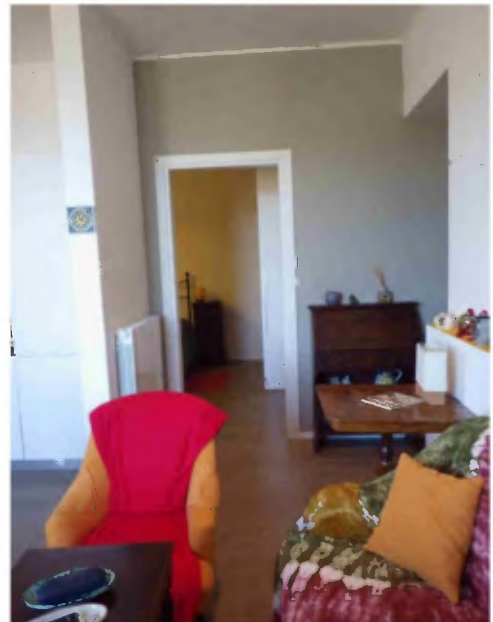


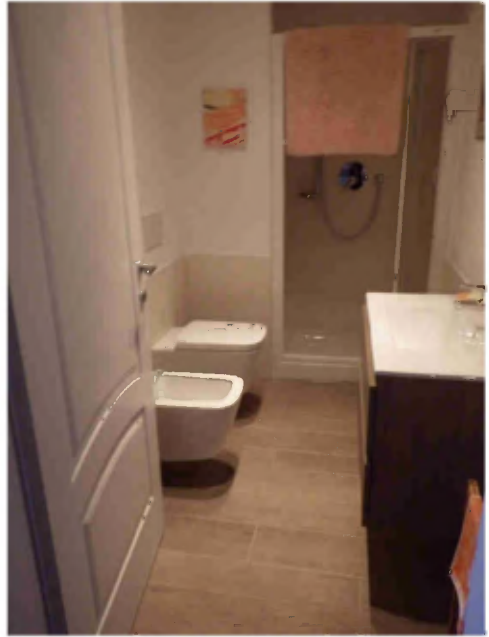
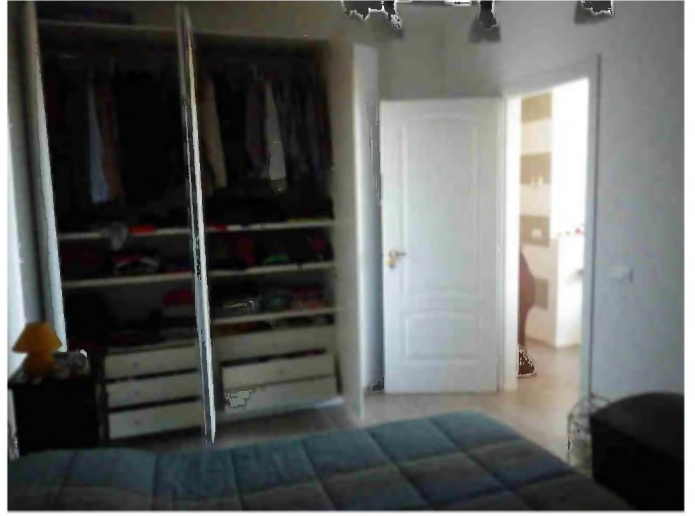




## Subalterno 2

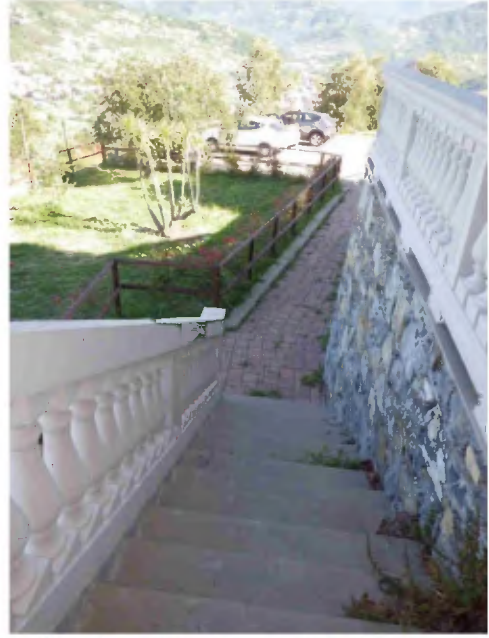








### Subalterno 3

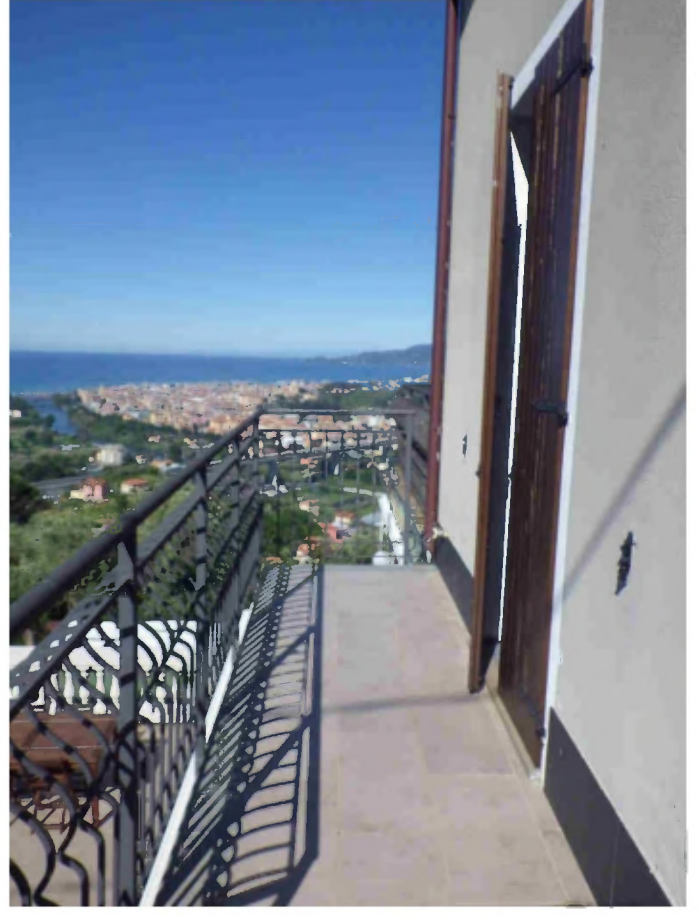


Ingresso al piano terra



## Locali al piano primo



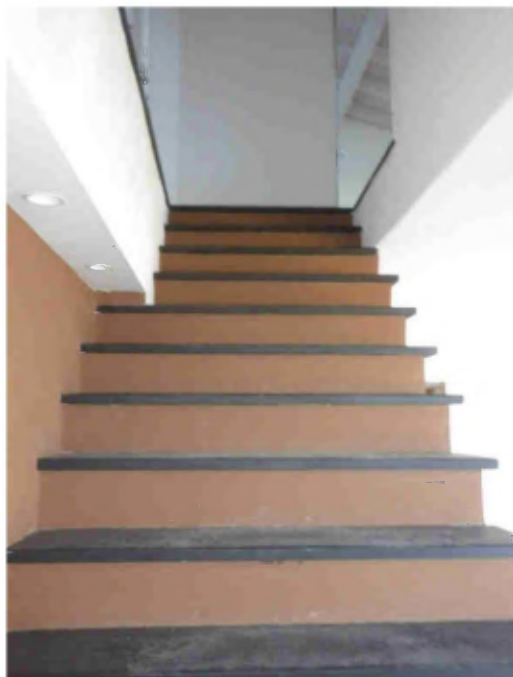


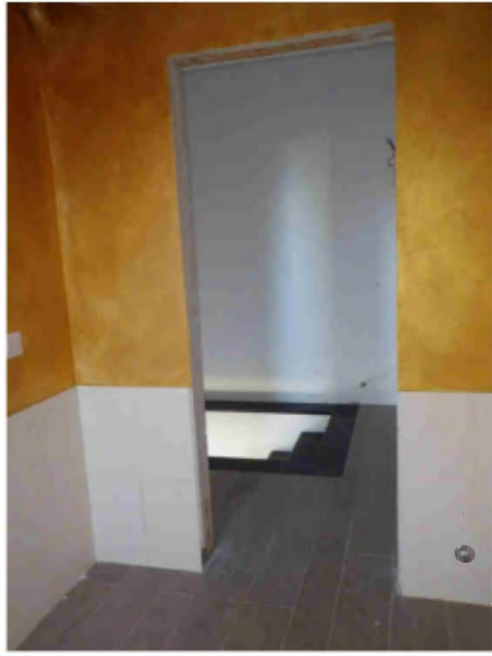






## Locali al piano secondo





Accesso al giardino dal poggiolo del primo piano

