

TRIBUNALE CIVILE DI GENOVA

Giudice dell' Esecuzione Dott. R. AMMENDOLIA

(R.G.E. 722 / 2015)

DOCUMENTAZIONE FOTOGRAFICA

- Documentazione fotografica del 02.12.2015

-----**ALLEGATO N. 3**



Viste Esterne

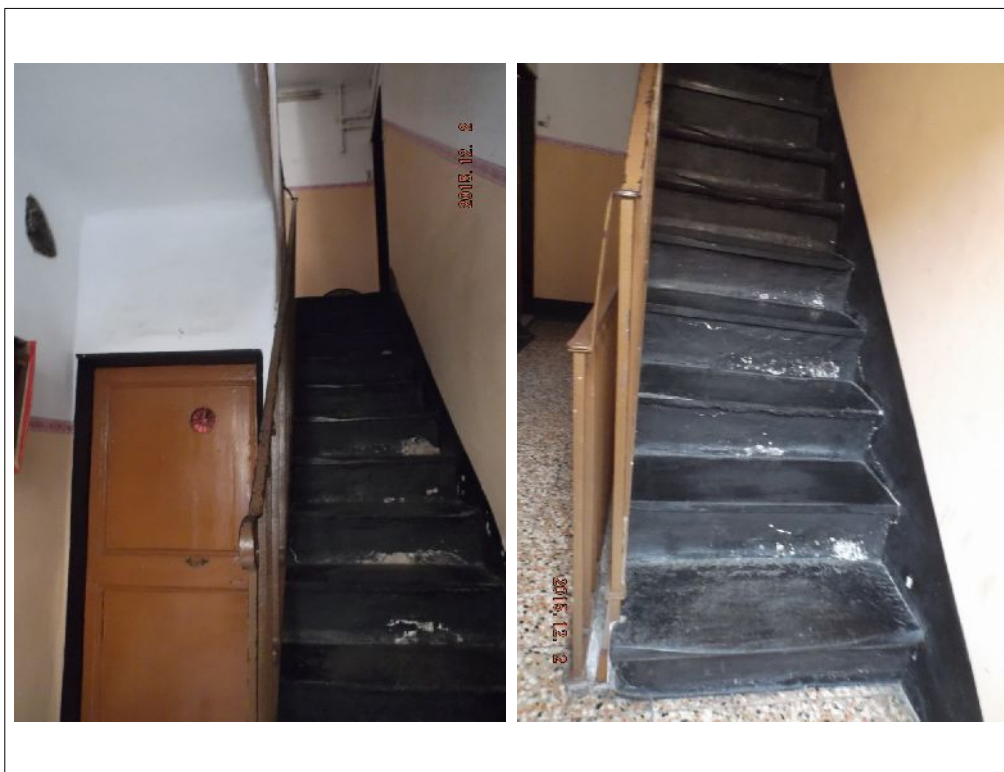


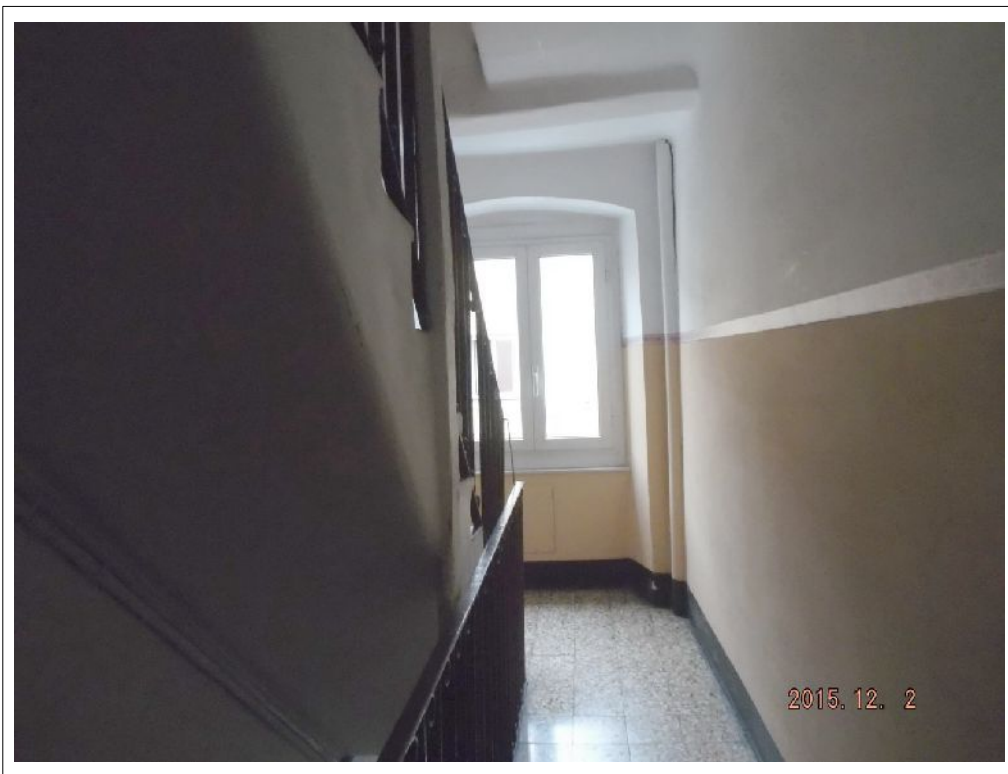


Atrio

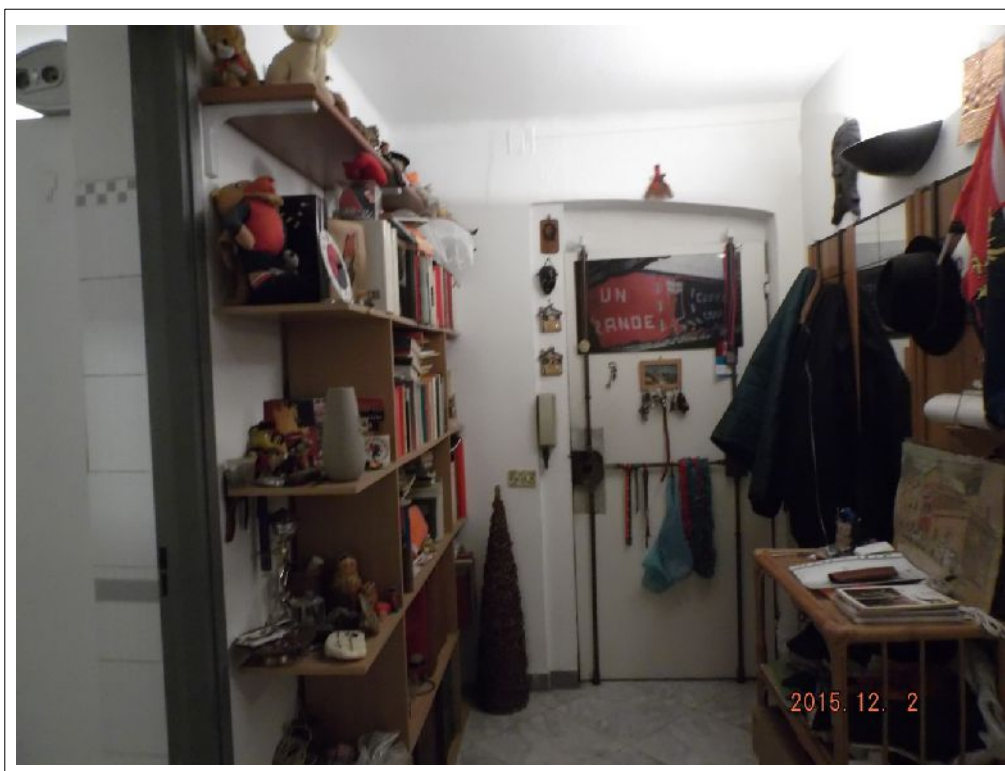


Vano scala

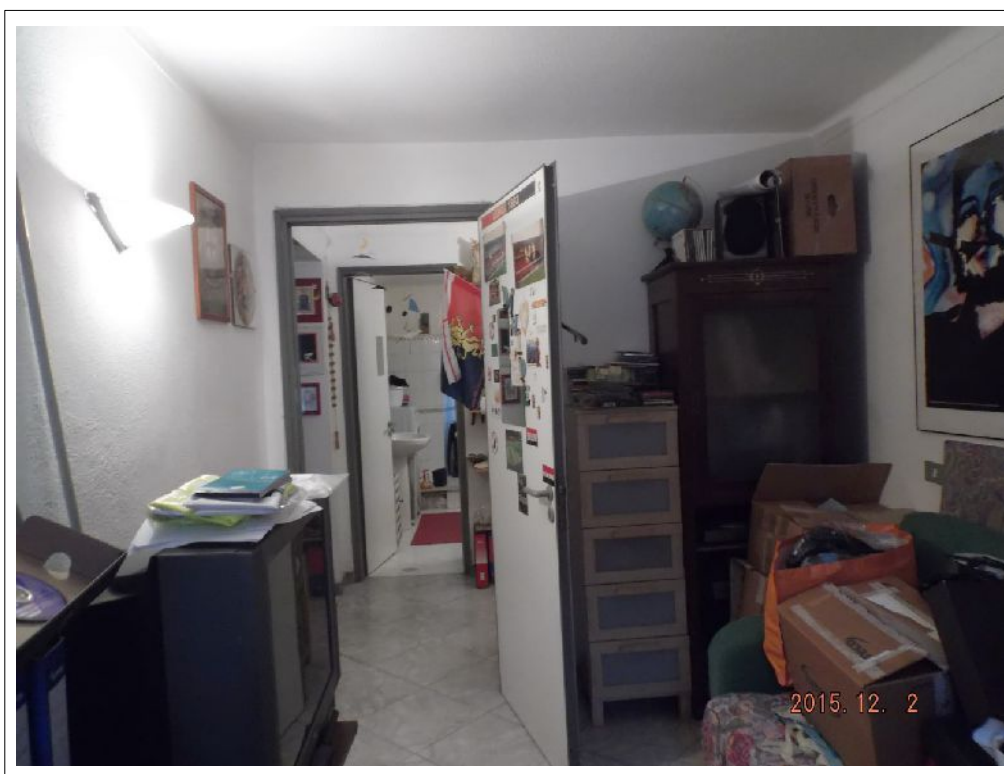




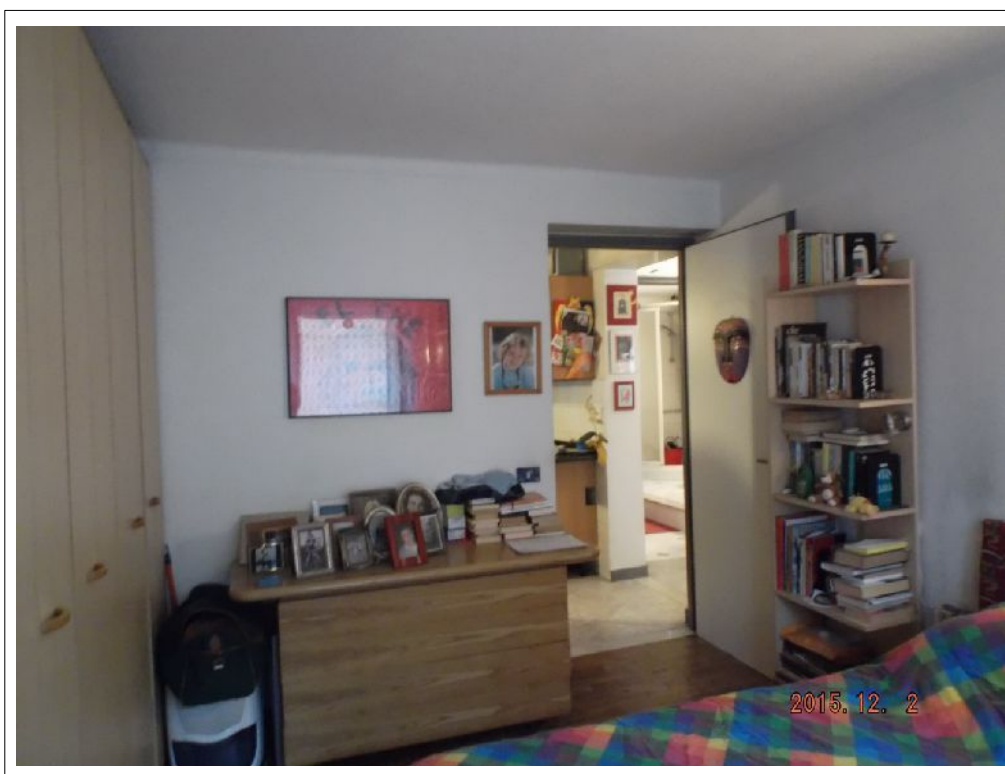
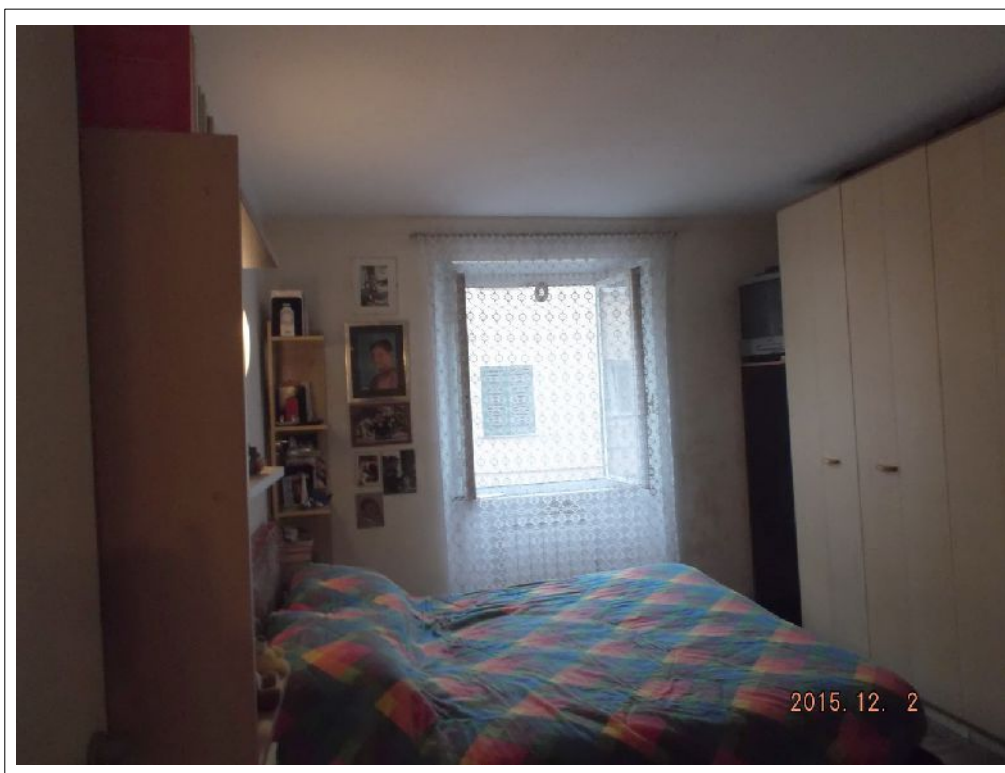
Viste interne
Ingresso-disimpegno



Cameretta



Camera



Cucina



Servizio igienico



Terrazzo lato nord-ovest e contesto esterno

