

## Localizzazione dell'edificio a Genova in viale Cembrano civico 8 nero



Foto 1: civico 8 nero, vista da viale Cembrano

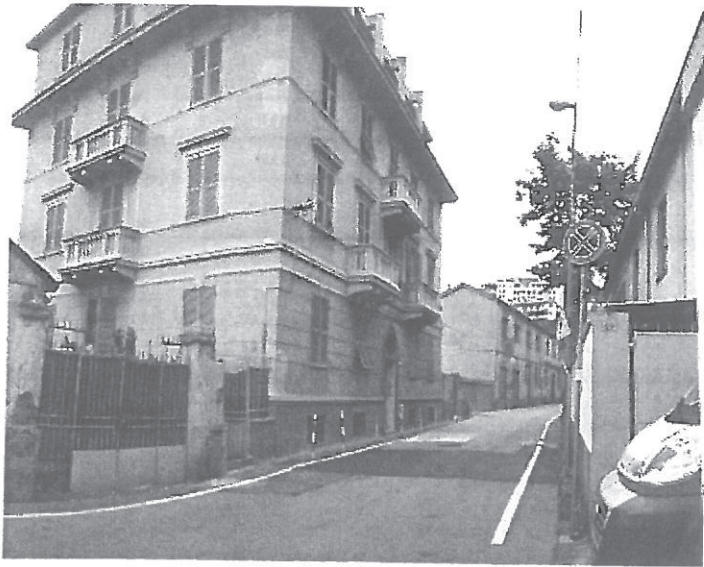


Foto 2: fronte principale e cancello accesso civ 10R

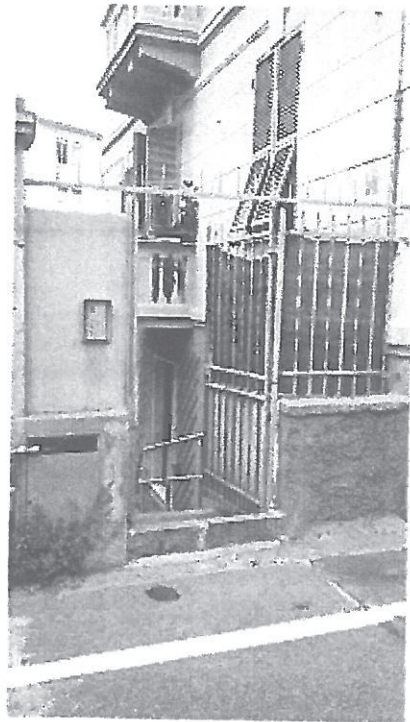


Foto 3: fronte laterale verso ingresso per interno 10R

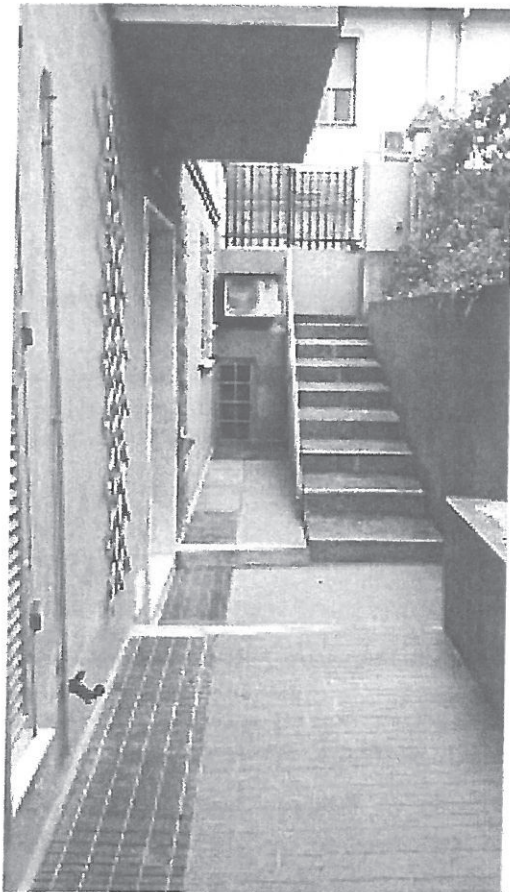


Foto 4: piccola corte antistante l'ingresso



Foto 5: scaletta di accesso

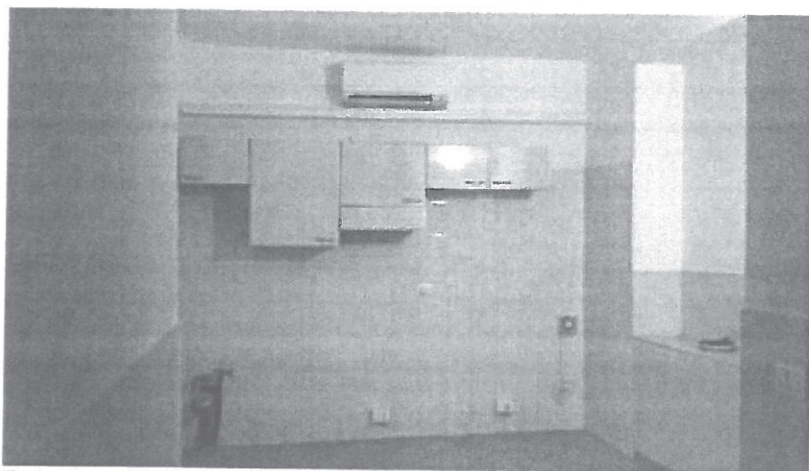


Foto 6: unità B

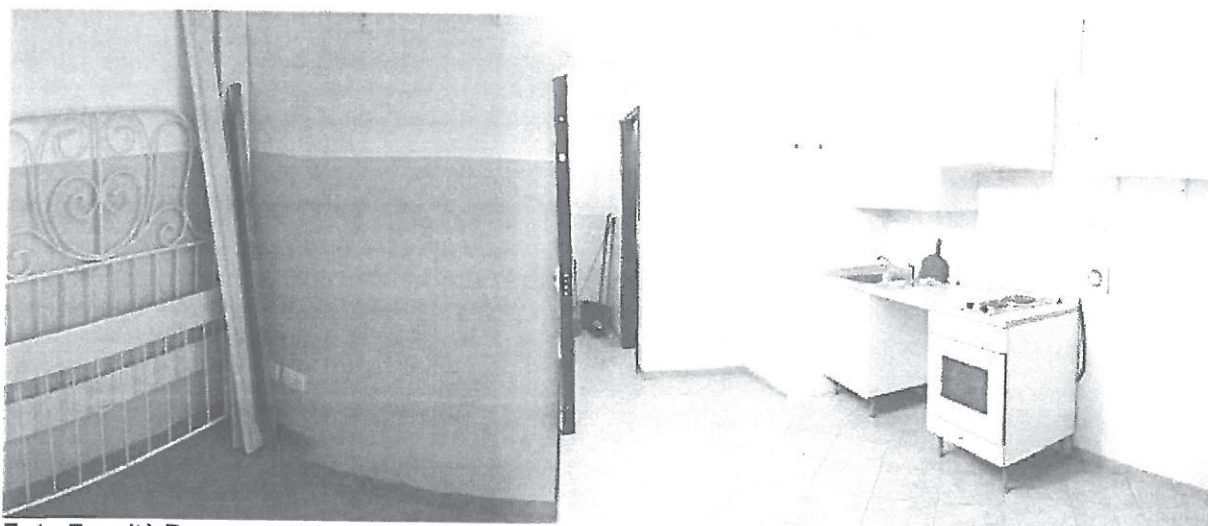


Foto 7: unità D

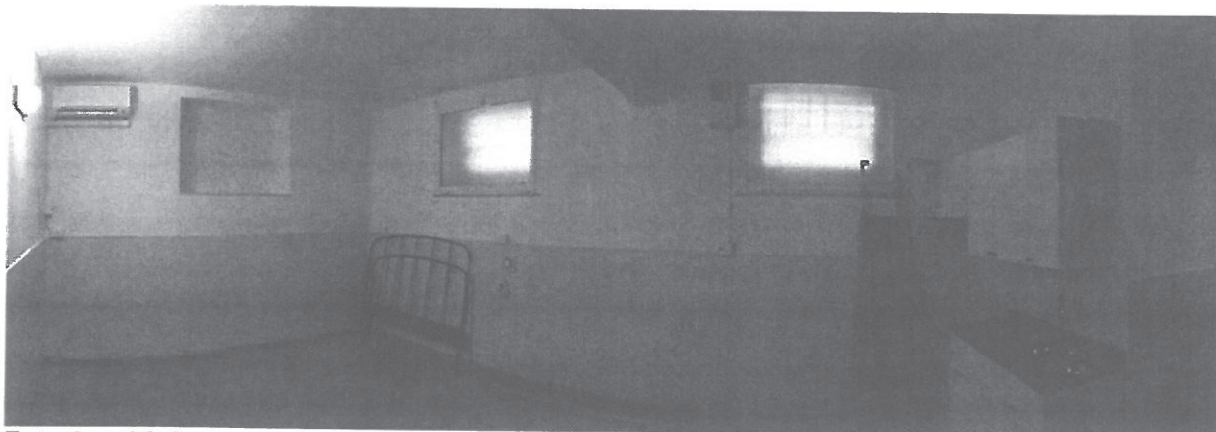


Foto 8: unità C

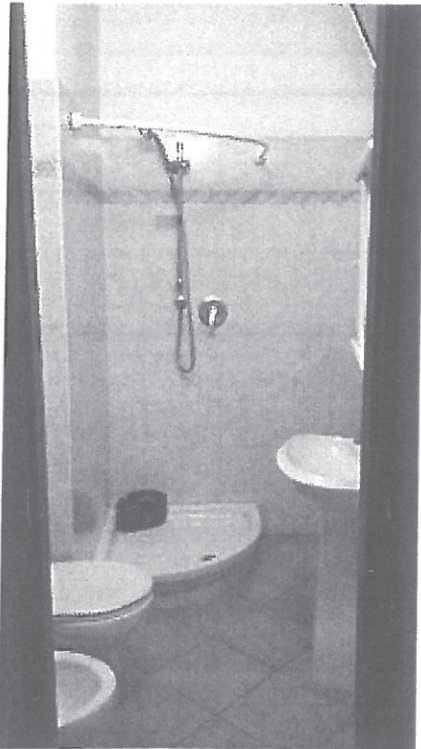


Foto 9: bagno

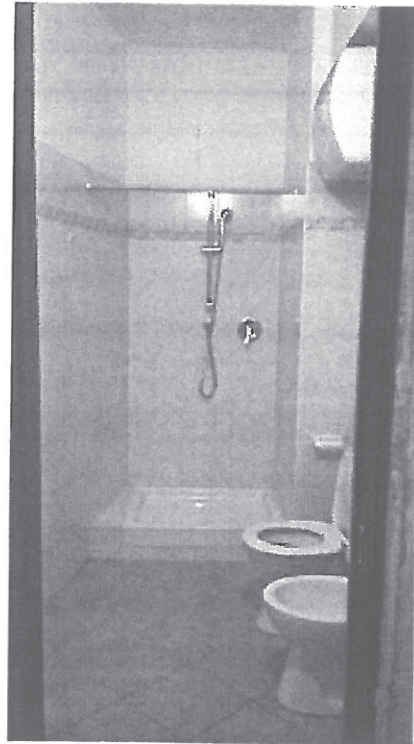


Foto 10: bagno

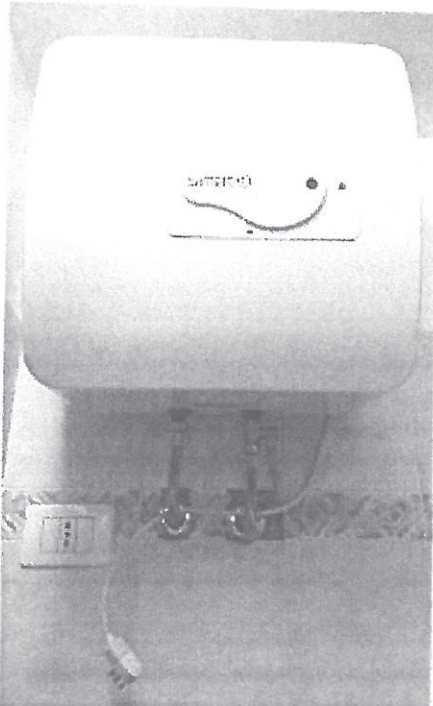
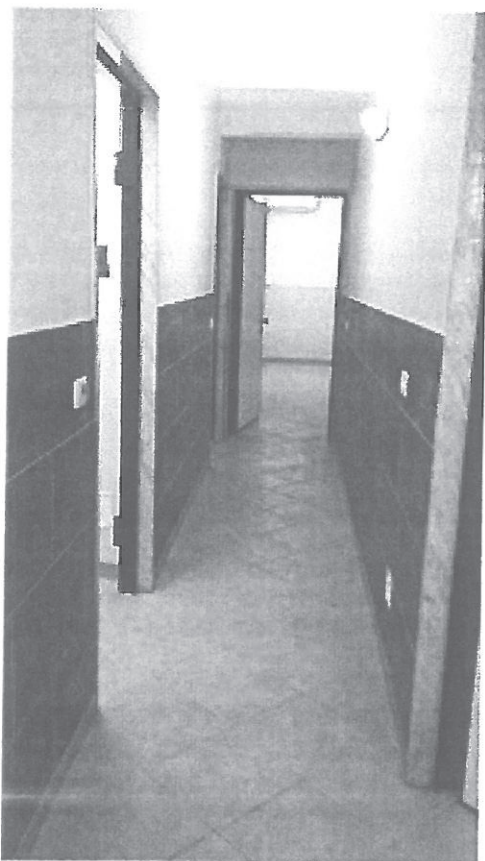


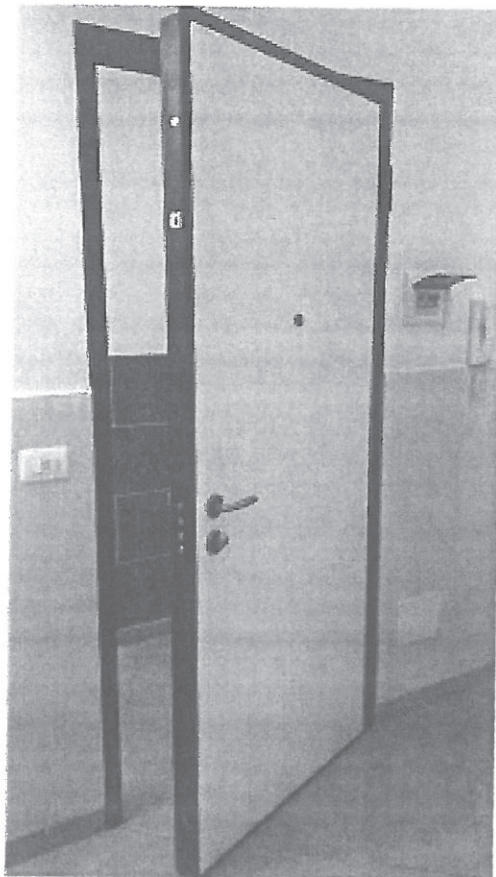
Foto 11: boiler per acqua calda in ogni bagno



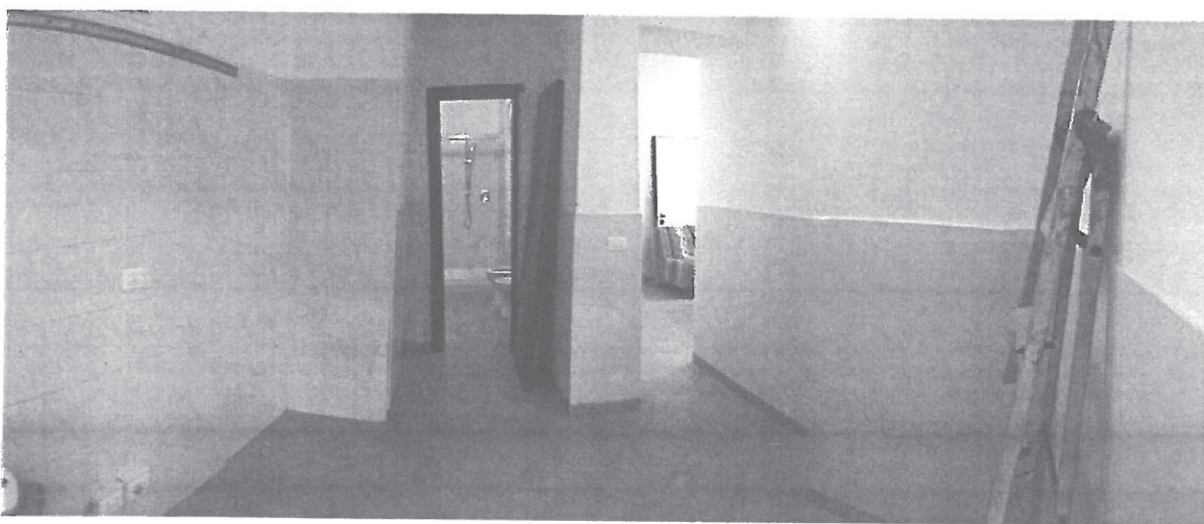
Foto 12: bagno



**Foto 13:** corridoio di distribuzione



**Foto 14:** porta blindata in ogni unità



**Foto 15:** unità B

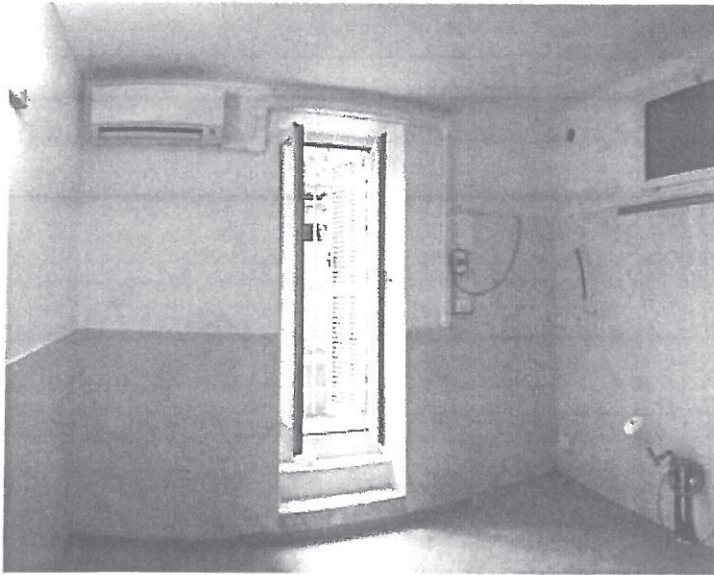


Foto 16: unità A

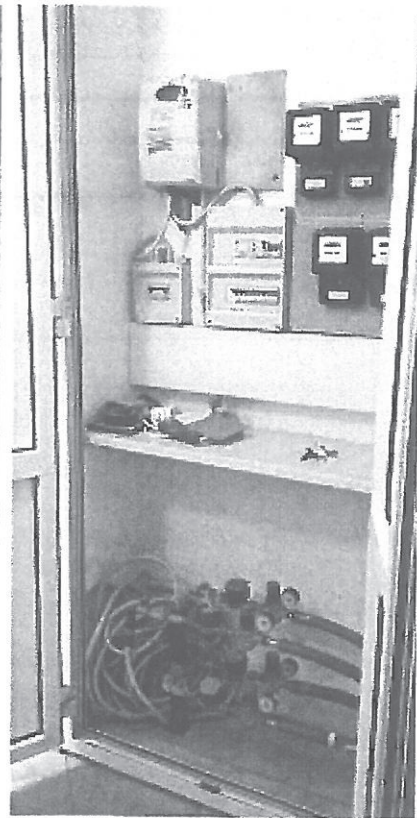


Foto 17: ingresso: armadio contatori elettrici

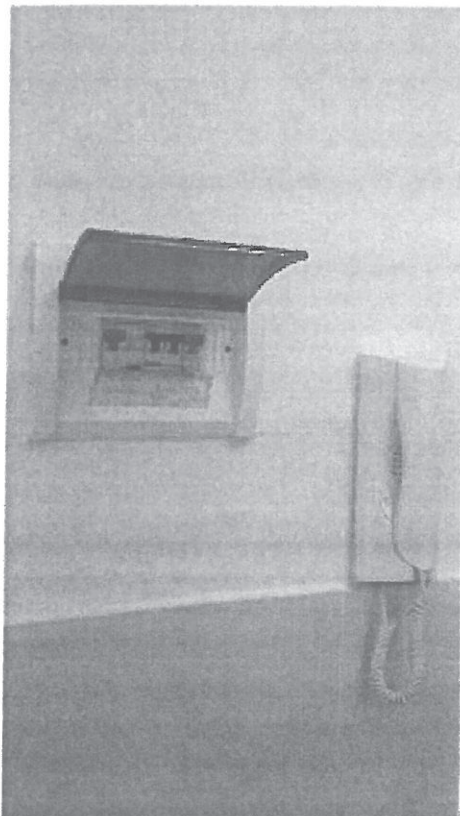


Foto 19: quadro elettrico e citofono presenti in ogni unità

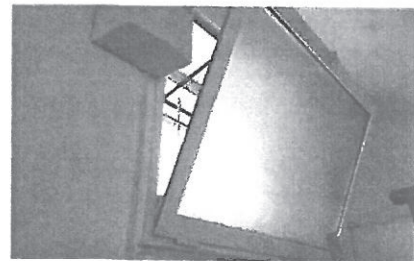


Foto 18: esempio di serramento a vasistas