

DOCUMENTAZIONE FOTOGRAFICA

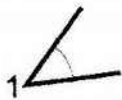
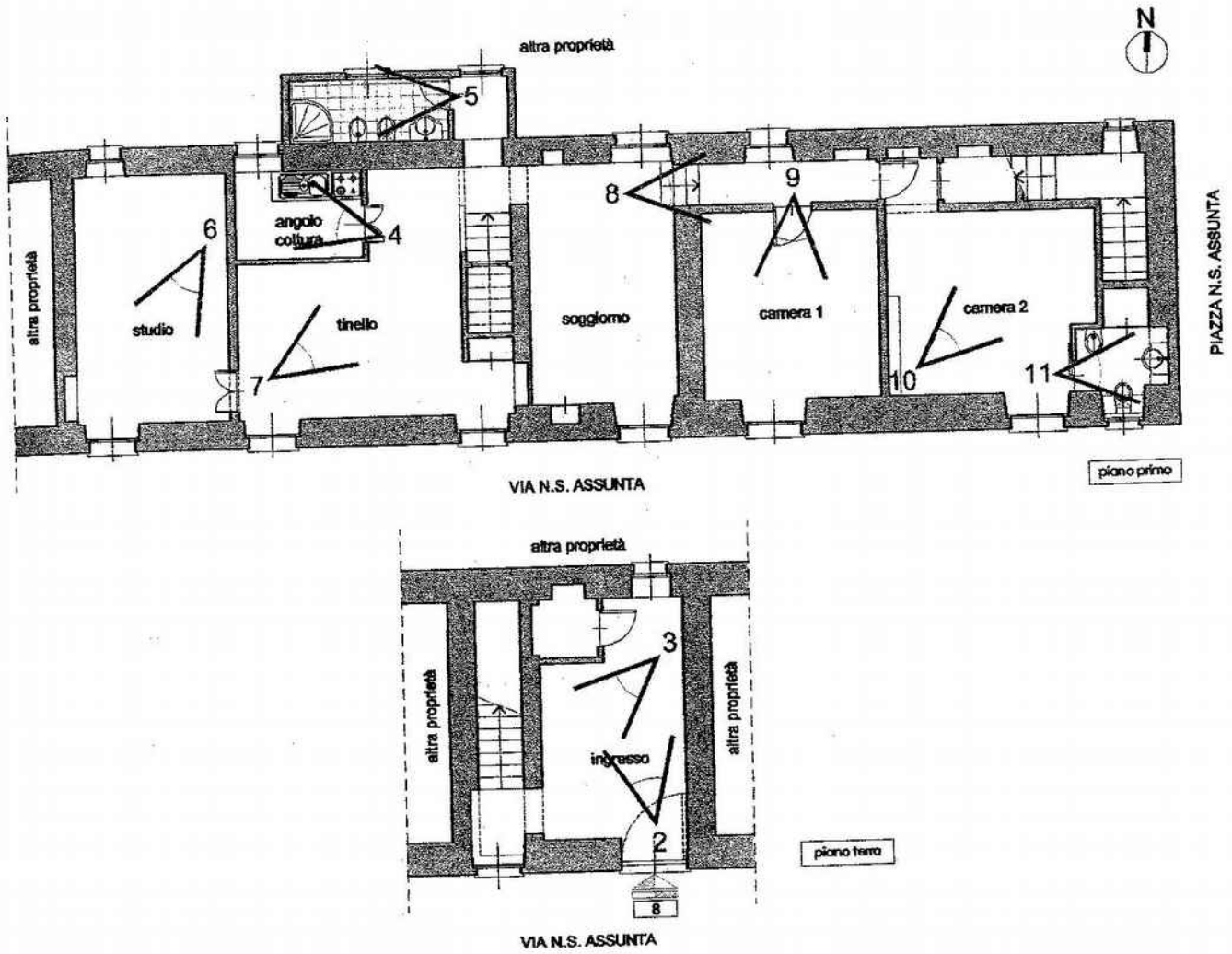




foto 1 - l'edificio da via N.S. ASSUNTA



foto 4 - angolo cottura



foto 2 - ingresso al p. t.

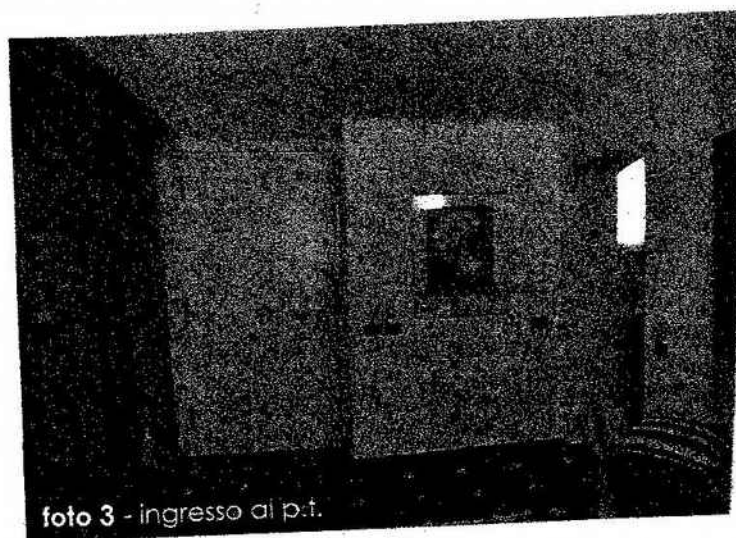


foto 3 - ingresso al p.t.

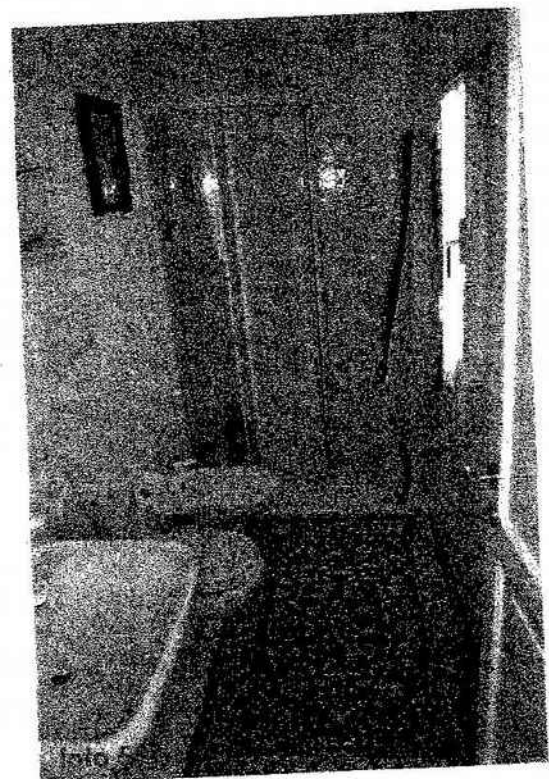


foto 5



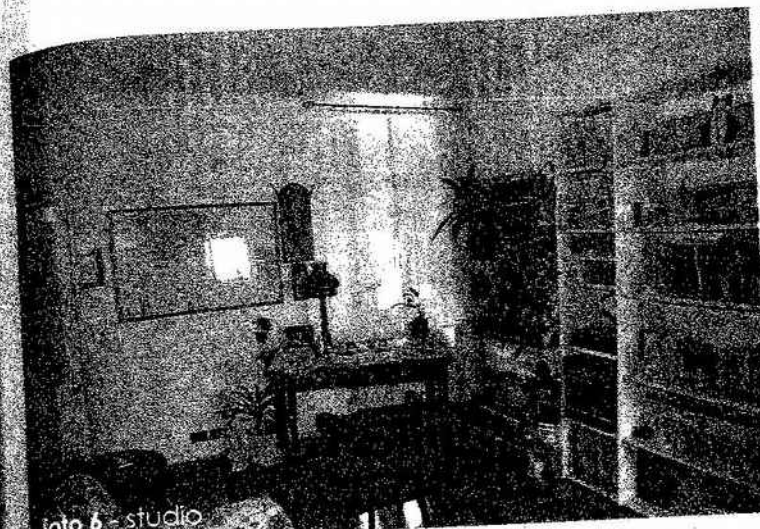


foto 6 - studio



foto 7 - tinello



foto 8 - soggiorno (corridoio verso le camere)



foto 9 - camera 1



foto 10 - camera 2



foto 11 - servizio igienico