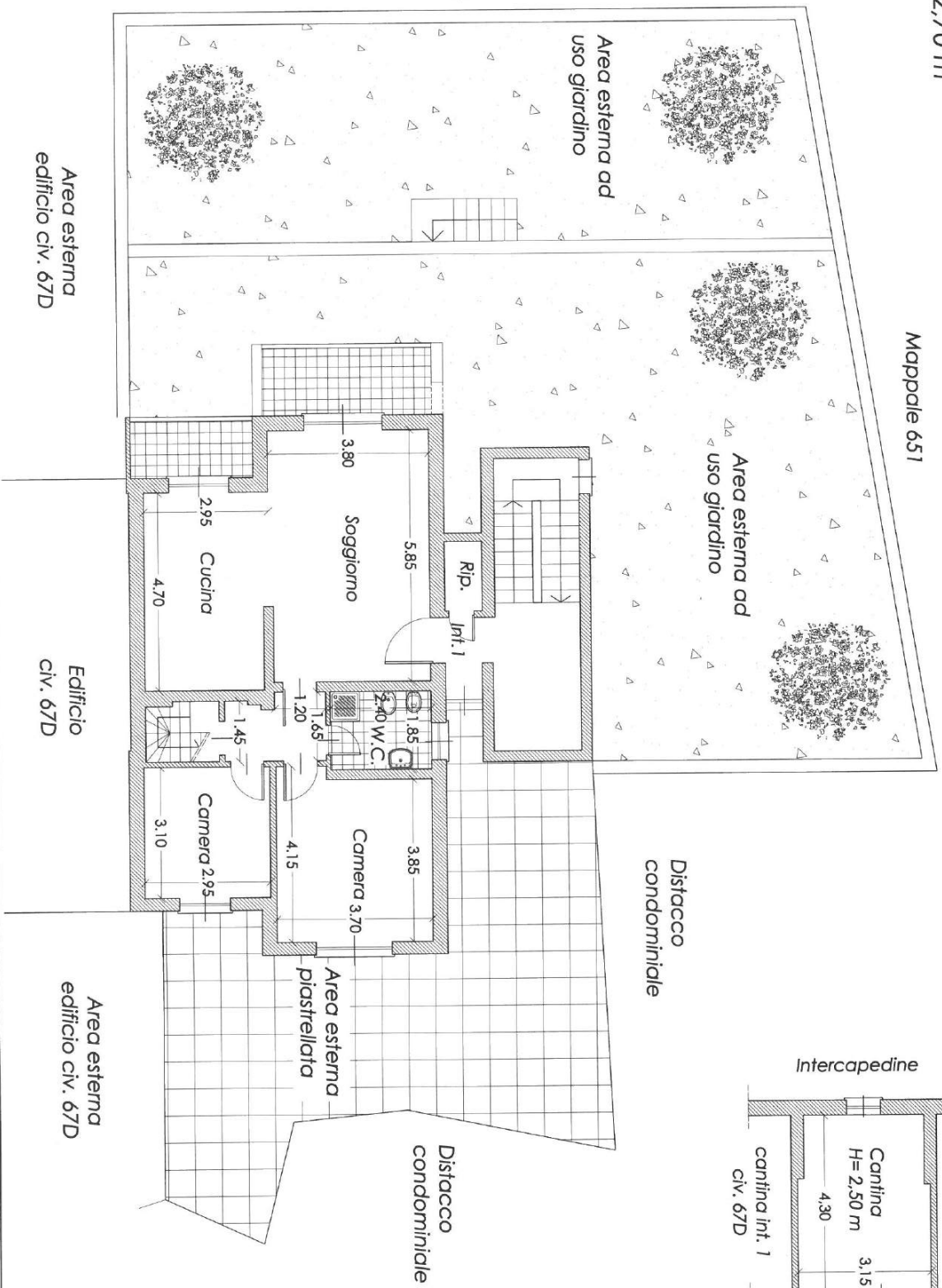


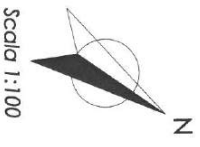
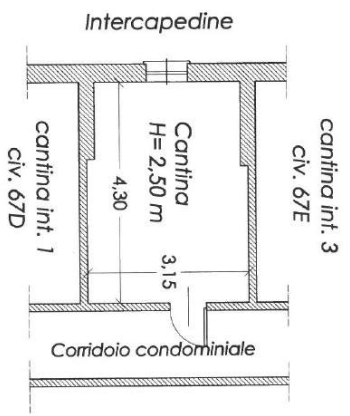
APPARTAMENTO (N.C.E.U. fg. 10 mapp. 272 sub. 25)
 Comune di Lavagna
 Via Tedisio civ. 67E int. 1
 Piano Terra
 H = 2,70 m

Mappale 651

Mapp. 274

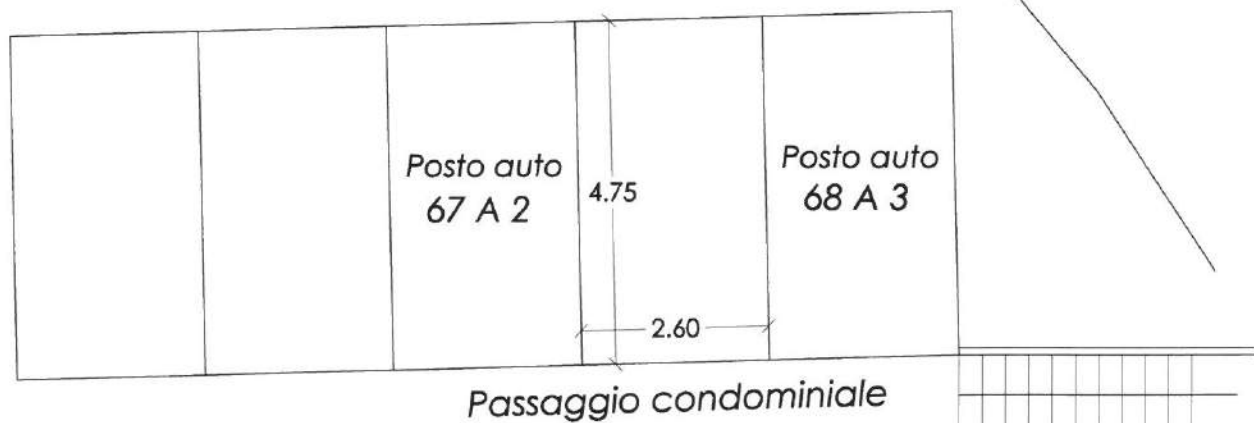


LOCALE CANTINA
 Piano Seminterrato



POSTO AUTO SCOPERTO (N.C.E.U. fg. 10 mapp. 272 sub. 143)
Comune di Lavagna
Via Tedisio civ. 67
Posto auto n° 67E1

Area
Condominiale



Passaggio condominiale

Edificio 68 A



Scala 1:100

